

## PRODUCT DESCRIPTION

Impermashield R Coat DB Waterproofing is a polymer-modified asphalt emulsion membrane that complies with CAN/CGSB 37.3-M. It is designed and recommended for use as the membrane component in an exterior wall waterproofing system. Impermashield R Coat DB forms a tough, durable membrane which bridges shrinkage cracks and maintains its superior performance properties when exposed to the chemicals found in soil. Impermashield R Coat DB meets the ICC ESR acceptance criteria for cold, liquid-applied below-grade exterior waterproofing materials.

The addition of rubber polymer to the base emulsion enables the membrane to:

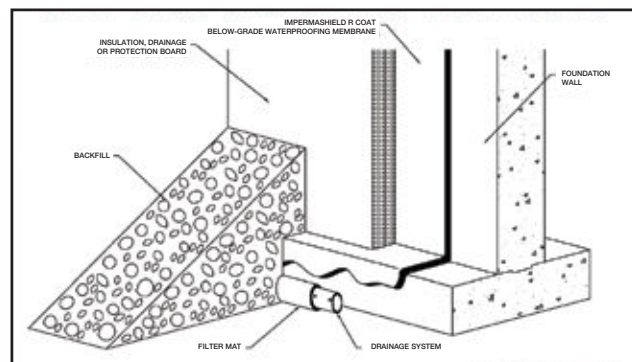
- Elongate up to 2000%
- Bridge shrinkage cracks (up to 1/16")
- Control water migration between the coating and application surface (localize leaks)
- Impede water at high heads due to improved water vapor permeance
- Comply with EPA Model Standard for radon control in new home construction
- Self-heal

Impermashield R Coat DB is manufactured to the highest quality control standards and in accordance with ISO 9001 requirements. ISO certification ensures that each gallon produced meets the highest quality control standards in the industry.

Impermashield R Coat DB is compatible with a wide range of insulation, drainage and protection products. Your applicator can design the waterproofing solutions best suited to each project's specific application requirements and budgetary constraints.

**Storage and Handling Considerations:** Store materials in a dry area and protect from direct sunlight. Ideally, the materials should be stored inside in a temperature-controlled environment (interior temperatures between 15–27°C). Do not allow Impermashield R Coat DB to freeze. Any materials exposed to the elements should be elevated above the ground and covered by a tarpaulin. Materials should not be exposed to excessive heat or direct flame.

Store waterproofing materials at room temperature until immediately prior to use when the ambient temperature is less than 4°C. Discontinue application if the material cannot be stored at temperatures which permit even distribution of product. Avoid inhaling the spray mist and take precautions to ensure adequate ventilation. Consult the product SDS Sheet prior to spraying.



## INSTALLATION

**Preparatory Work:** The walls and footings must be dry and of sufficient strength and design to ensure structural integrity. Concrete wall and mortar joints must cure a minimum 16 hours before Impermashield R Coat DB is applied. Foundation design using concrete blocks should fall within guidelines established by the National Concrete Masonry Association and be acceptable to the local building code enforcement agency.

Remove dirt and debris from the walls and footings with a stiff brush or broom. Scrape any loose mortar and debris from the walls and footings with a metal scraper. Do not apply Impermashield R Coat DB over standing water. Repair any cracks in excess of 1/16" along the footings or in the wall surface and all honeycombed areas with a non-shrinking grout. Fill all voids around tie holes, recessed ties and other small voids with an acceptable fiber-reinforced asphalt roofing cement or cementitious repair material.

**Membrane Installation:** After the wall and footing surfaces have been properly prepared, spray, roller or brush apply Impermashield R Coat DB over the entire wall surface (to the designated grade line) and along the perimeter. Particular emphasis should be paid to wall joints and the joint between the walls and footings. Impermashield R Coat DB is applied at a rate of 20–25 sq. ft. per gallon (required minimum 60 mils wet, 40 mils dry) in residential applications and to the specified rate in commercial applications.

Protection, drainage or insulation board is typically installed over Impermashield R Coat DB to protect the membrane from damage by the backfill, to assist in drainage and/or to insulate the foundation wall. Protection Board is not required by code in most situations; however, it is recommended to improve the overall performance of the system. Impermashield R Coat DB is compatible with a wide range of boards including but not limited to, rigid fiberglass, composite sheet drain, synthetic fiber boards and others. Impermashield R Coat DB is chemically compatible with polystyrene foam insulation but we urge caution with its use\*. Any question regarding the compatibility of Impermashield R Coat DB with a specific insulation/protection or drainage board should be directed to the Impermashield Technical Department.

Drain tile or strip drain must be installed per the manufacturer's instructions to ensure proper removal of water from the foundation walls and footings. Backfill must be graded to direct surface water away from the exterior foundation walls.

**Atmospheric Condition Restrictions:** Impermashield R Coat DB should not be applied during inclement weather and the installation should not proceed in the event that precipitation is probable during the application. Consult your local Impermashield representative or the Impermashield Technical Department for application recommendations when application temperatures are less than -9°C. When the ambient temperature is below freezing, the wall should be free from snow, ice, frost or any frozen moisture as this will prevent proper adhesion. Please be aware that Impermashield R Coat DB cannot freeze before it is in place on the substrate wall.

**Additional Procedures for Poured Concrete Walls:** Impermashield R Coat DB can be applied immediately after the forms have been removed. Remove wall ties prior to application. Fill any large voids and tie holes with a non-shrinking grout or asphalt-based cement.

# Impermashield R COAT DB



7 FLUID APPLIED | Membrane Waterproofing

## Additional Procedures for Concrete Block Walls:

Mortar joints must be made flush to provide a void-free bonding surface. ImpermaShield R Coat DB will adhere to both parged and unparged concrete block walls. Due to the porous nature of unparged concrete block walls, additional material may be required to achieve the specified dry mil thickness. The mortar must be Type M or Type S as specified by ASTM C-270-91 a (Specification for Mortar for Unit Masonry, ASTM Vol. 04.01 and 04.05). Allow the mortar joints to cure a minimum of 16 hours prior to applying waterproofing.

## Spray Equipment Recommendations:

Gasoline-powered, airless spray units with a minimum 4,000 p.s.i. rating will effectively spray any ImpermaShield waterproofing product. For efficient spraying, use a heat exchanger to warm the product to 38–54°C (100–130°F) immediately prior to spraying. A reverse-a-clean spray tip with an orifice between .029 and .035 is recommended for spraying ImpermaShield R Coat DB. Most spray systems utilize 150' of hose. Use ½ inch, 5,400 p.s.i. rated hose for the first 100 feet. Use ¾ inch, 4,700 p.s.i. rated hose for the next 50 feet. A 4-foot, ¼ inch whip line is used immediately before the spray gun to facilitate spraying. Do not mix water- and solvent-based materials in the hose lines. Clean lines with mineral spirits before switching materials. Clean spray equipment with mineral spirits.

## AVAILABILITY AND COST

Distrocan materials are produced in and shipped from our facility. For the name and number of the nearest Distrocan representative, call us at 1-800-619-0916.

## WARRANTY

Distrocan may offer warranties up to 10 years for its membranes and system applications when they are installed by a Certified Distrocan installer in accordance with the published specifications in effect at the time of installation. For specific warranty terms and conditions, contact your local Distrocan representative.

## TECHNICAL SERVICES

Your local Distrocan representative is available to assist you in selecting the appropriate product and to provide on-site application assistance. For further information, please contact our Technical Service Dept. at 1-800-619-0916.

<b>Adhesion Strength to Poured Cement:</b>	2.469 lbf/in. ASTM C 836, Meets AC 29 requirement. Section 6.10
<b>Adhesion Strength to Unparged Masonry:</b>	1.855 lbf/in. ASTM C 836, Meets AC 29 requirement. Section 6.10
<b>Resistance to Water:</b>	No blistering or (ASTM D 2939, Section 15) re-emulsification. Meets AC 29 requirement.
<b>Remains in Place During Application:</b>	Meets AC 29 requirement
<b>Water Vapor Permeance:</b>	16 ng/Pa.m <sup>2</sup> .s (.29 perms) ASTM E 96, Water Method
<b>Extensibility after Heat Aging:</b>	¼" No Cracking (ASTM C 836, Section 6.12) Meets AC 29 requirement
<b>Elongation:</b>	Greater Than 1900% (ASTM D 412, die c)

**CAUTION:** ImpermaShield R Coat DB is a water-based material. KEEP FROM FREEZING DURING TRANSIT AND STORAGE.

May help to contribute to LEED® credits:	
<b>EA Credit 1:</b>	Optimize Energy Performance
<b>EQ Credit 3.1:</b>	Construction IAQ Management Plan: During Construction
<b>EQ Credit 4.2:</b>	Low Emitting Materials: Paints and Coatings
<b>MR Credit 5.1:</b>	Regional Materials: 10% Extracted, Processed and Manufactured Regionally
<b>MR Credit 5.2:</b>	Regional Materials: 20% Extracted, Processed and Manufactured Regionally

## Emergency Telephone Number

CHEMTREC: +1-703-527-3887 / 1-800-424-9300

## TECHNICAL SERVICES | PRODUCT SPECIFICATIONS

Type: Polymer modified asphalt waterproofing membrane

<b>Color:</b>	Black
<b>Solids:</b>	62% +/- 5 (by weight)
<b>Density:</b>	8.4 lbs./gal (1.0 g/cu. cm)
<b>Application:</b>	Airless spray, brush, roller
<b>Cure Time:</b>	12 – 24 hours
<b>Hydrostatic Pressure:</b>	Meets AC 29 requirement over Cracks (ASTM C 1306) for pressure resistance.
<b>Low-Temperature Flexibility:</b>	Meets AC 29 requirement. (ASTM C 836 @ - 26 C.) No cracking or loss of and Crack Bridging adhesion.

ImpermaShield  
333 ST-HUBERT, LAVAL  
QUEBEC, H7G2Y5

1-800-619-0916 • info@impermaShield.ca

[impermaShield.ca](http://impermaShield.ca)