



DISTROCAN



CATALOGUE DE PRODUIT

2025

333 St-Hubert, Laval, QC, H7G2Y5
1-800-619-0916 • info@distrocan.ca

distrocan.ca

CEMENTITIOUS PRODUCTS

ACCESSORIES



**TAMPICO FIBER BRUSH -
13" X 1" X 3"**

SKU: 95006

MORTARS



DISTROCAN - JET SET 1-3 MIN

SKU: JETSET13



DISTROCAN - JET SET 3-5 MIN

SKU: JETSET35



DISTROCAN - JET SET 5-10 MIN

SKU: JETSET510



MAPEI - PLANISEAL PLUG

SKU: 2437025



MAPEI - PLANITOP 23

SKU: 2758720



MAPEI - PLANITOP X

SKU: 2757423



MAPEI - PLANITOP XS

SKU: 2757323

SEALERS



MAPEI MAPEFLEX P1 FT

SKU: 2UA1516253

DAMP PROOFING PRODUCTS

ACCESSORIES



CAGE FOR ROLLER - 9 1/2"

SKU: ZFR499N



PAINT SLEEVES - PACK OF 10

SKU: Z9T1510



PLASTIC DEEP TRAY - 2L

SKU: ZTR200



SPLIT FOAM SLEEVE - 9" X 3/4"

SKU: Z9SF20



**TAMPICO FIBER BRUSH -
13" X 1" X 3"**

SKU: 95006



**THIROCO T20 - PLASTIC
CEMENT**

SKU: T20020



**THIROCO T20W - PLASTIC
CEMENT - WINTER GRADE**

SKU: T20W20

SEALERS



BAKOR 700-01

SKU: BK70001074

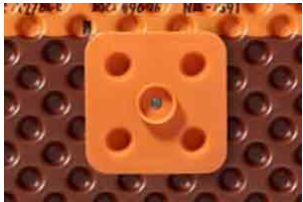


THIROCO T-60

SKU: T60189

DELTA PRODUCTS

ACCESSORIES



DELTA FASTNER

SKU: 22610005 / 22610006



DELTA MOLD STRIP

SKU: 22610021



DELTA SEALANT

SKU: 22610015

MEMBRANES



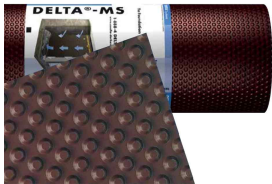
DELTA DRAIN

SKU: 22600014 / 22600015



DELTA DRY & LATH

SKU: N/A



DELTA MS

SKU: 22600001 / 22600002 / 22600003 /
22600004 / 22600005 / 22600006



DELTA VENT S

SKU: N/A



DELTA VENT SA

SKU: N/A

FITTINGS

HDPE



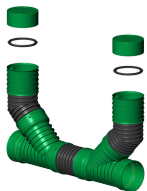
3" TEE

SKU: 1T0033



3" / 4" MALE CAP

SKU: 1B0035 / 1B0045



4" CLEANOUT CHIMNEY

SKU: 830004 / 2B100CG



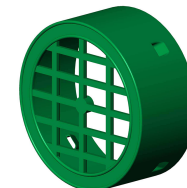
4" ELBOW, 90°

SKU: 1C0049



4" FEMALE CAP WITH CLIP

SKU: 2B100CV



4" FEMALE GRATE CAP

SKU: 1TTG04C



**4" HDPE PIPE TO PVC PIPE
ADAPTER**

SKU: 1ADRC04



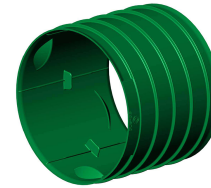
4" TEE-WYE

SKU: 1TY044



**4" UNIVERSAL DRAIN
ADAPTER**

SKU: 1ADRCU04



**4" FEMALE-FEMALE
COUPLER**

SKU: 3MCC004C



4" WYE

SKU: 1DY004

PVC-MUNICIPAL



4" 5" 6" 8" COUPLING

SKU: 33ACOUP04GG



4" 5" 6" 8" ELBOW 22 1/2°

SKU: 21A2204GG



4" 5" 6" 8" ELBOW 45°

SKU: 21A4504GG



4" 5" 6" 8" ELBOW 45°

SKU: 22A4504GS



4" 5" 6" 8" TEE

SKU: 07A040404GGG



4" 5" 6" 8" WYE

SKU: 01A040404GGG



4" 6" 8" 90° SHORT RADIUS

SKU: 21A9004GG



4" 6" 8" 90° SHORT RADIUS

SKU: 22A9004GS



4" 6" 8" TEE WYE

SKU: 04A040404GGG



4" 90° LONG RADIUS

SKU: 21A9004LRGG

PVC-PLUMBING



4" CAP, NO THREAD

SKU: P1604



4" COUPLING WITH STOPPER

SKU: P604



4" ELBOW, 22 1/2°

SKU: P1704



4" ELBOW, 45°

SKU: P404



4" ELBOW, 90° LONG TURN

SKU: P256



4" FITTING CLEANOUT

SKU: P1504



4" FITTING CLEANOUT

SKU: P1404



4" PUSH FIT ADAPTER

SKU: IC44P



4" TEE

SKU: P104



4" TEE-WYE

SKU: P156



4" WYE

SKU: P304



4" ELBOW, 45°

SKU: P504



4" THREADED PLUG

SKU: P1154

RUBBER COUPLINGS



**CAST IRON/PLASTIC/STEEL
TO CAST
IRON/PLASTIC/STEEL**

SKU: 1056-44



**CONCRETE TO CAST
IRON/PLASTIC/STEEL**

SKU: 1006-44



**DUCTILE IRON TO CAST
IRON/PLASTIC/STEEL**

SKU: 1051-44

INJECTION PRODUCTS

ACCESSORIES



ALEMITE GASKET REPAIR KIT

SKU: 336523



ALEMITE GREASE GUN FOR POLYURETHANE INJECTION

SKU: 586-B



ALEMITE SPRING REPAIR KIT

SKU: 393756-6



BALL VALVE 1/8" X 1/8" FF THREADED BOTH SIDES

SKU: 14.1102



BOX OF 50 PROFESSIONAL BLACK NITRILE GLOVES

SKU: 34606-M / 34606-XL



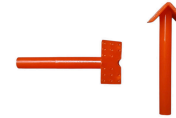
BRASS FITTING FEMALE TO MALE PIPE ADAPTER 1/8" MALE TO 1/4" FEMALE

SKU: 33.1912



BRASS FITTING STREET TEE 1/8" FEMALE WITH TWO 1/8" FEMALE

SKU: 33.3410



CORNER INJECTOR

SKU: INJECTA-PCE50



COUPLER FOR INJECTION

SKU: 600105



DUAL CARTRIDGE RCF POLYURETHANE EXPANDING FOAM

SKU: FG20077



HOSE BARB TO MALE PIPE CONNECTOR 1/8" TO 1/8"

SKU: 33.4110



INJECTAPHOS PHOSPHORIC ACID SURFACE PREP -



INJECTION HOSE ADAPTER 90°

SKU: FU-3459-04-02



PROFESSIONAL CONCRETE CRACK REPAIR ENHANCER

SKU: INJECTAPHOS1L / INJECTAPHOS20L



INJECTION HOSES FOR GREASE GUNS

SKU: ECH-720-02MM35



INJECTION PACKER WITH ZERK

SKU: DISTROPACKNYL



MALE CONNECTOR 1/4" TO THREAD 1/8"

SKU: 32.1156



NUT SETTER 5/16" NON- MAGNETIC FOR ZERKS

SKU: PM-869/4



NYLON TUBING 1/4" OD

SKU: 40.1140



PERFORATED 1/2" INJECTOR

SKU: INJECTA-PPE100



PLUG FOR INJECTOR

SKU: INJECTA-BE100



RCF EPOXY GUN DUAL CARTRIDGE

SKU: FG20023



REDUCER MALE CONNECTOR 3/8" TO 1/4"

SKU: 32.3382



REDUCER MALE CONNECTOR 5/16" TO 1/4"

SKU: 32.3370



RUBBER INJECTION PORTS

SKU: INJECTA-PRE1000



STAINLESS STEEL SILICONE FLUID FILLED PRESSURE GAUGE - 0 - 1000 PSI - LM MOUNT

SKU: 62.6670



**STAINLESS STEEL
SILICONE FLUID FILLED
PRESSURE GAUGE - 0 -
10000 PSI - LM MOUNT**

SKU: 62.6695



**STAINLESS STEEL
SILICONE FLUID FILLED
PRESSURE GAUGE - 0 -
4000 PSI - LM MOUNT**

SKU: 62.6688



STATIC MIXER

SKU: INJECTASM1432 / INJECTASM3830



STOPAQ 2100 AQUASTOP

SKU: 103025



T-SHAPED INJECTOR

SKU: INJECTA-PTE100



TEFLON 1/2" X 40'

SKU: 33.9080



**UNION MALE CONNECTOR
1/4" TO 1/4"**

SKU: 32.2158

EPOXY PRODUCTS



EPICOL T

SKU: 120298



MAPEI EPOJET

SKU: 1561144 (399ml) / 1561111KIT (11.35L)



RCF HIGH STRENGTH ANCHORING EPOXY PASTE

SKU: FG20075 (600ml) / FG20177 (2 Gal.)



RCF STRUCTURAL EPOXY INJECTION RESIN

SKU: FG20076

POLYURETHANE RESINS



MAPEI - RESFOAM 1KM

SKU: 2446120



MAPEI - RESFOAM HB 45

SKU: 2445958



MAPEI - RESFOAM HL 35

SKU: 2445619-1



MAPEI - RESFOAM PF

SKU: 2445419



SPETEC GEN ACC

SKU: 102426



SPETEC GEN ACC FAST

SKU: 102428



SPETEC GT350

SKU: 101888



SPETEC H100

SKU: 101895



SPETEC PUMP CLEANER

SKU: 103001



SPETEC SEAL F400

SKU: 101884

POLYURETHANE RESINS MAPEI



MAPEI - RESFOAM 1KM

SKU: 2446120



MAPEI - RESFOAM HB 45

SKU: 2445958



MAPEI - RESFOAM HL 35

SKU: 2445619-1



MAPEI - RESFOAM PF

SKU: 2445419

POLYURETHANE RESINS SPETEC



SPETEC GEN ACC

SKU: 102426



SPETEC GEN ACC FAST

SKU: 102428



SPETEC GT350

SKU: 101888



SPETEC H100

SKU: 101895



SPETEC PUMP CLEANER

SKU: 103001



SPETEC SEAL F400

SKU: 101884

LANDSCAPING

ACCESSORIES



LANDSCAPING NAILS - SPIRAL

SKU: CLOUSPLSP250



LANDSCAPING NAILS - COMMON

SKU: CLOUSPLC50



PLASTIC BORDER FOR PAVERS

SKU: N/A



TCT HOLE SAW

SKU: DISTROTCT325

PIPES

HDPE



3" PERFORATED (TYPE 2)

SKU: 100304 / 100313



4" PERFORATED (TYPE 2)

SKU: 100442



4" SOLIFLEX PERFORATED (TYPE 3)

SKU: 120444



4" NON-PERFORATED

SKU: 100455



4" SOLFLO MAX NON-PERFORATED

SKU: 320420 / 320415



4" PERFORATED (MEGA 3)

SKU: 100461 / 100447 / 100445

PVC-MUNICIPAL



SDR28

SKU: SG2804014WH / SG2805014WH /
SG2806014WH



SDR35

SKU: SG3504014 / SG3505014 / SG3506014 /
SG3508014

PVC-PLUMBING



4" PERFORATED, 7 HOLE

SKU: SS3504010P7015



4" PERFORATED, 3 HOLE

SKU: SS04010P3012

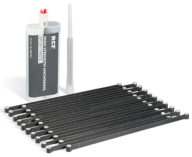


4" NON PERFORATED

SKU: SS04010

STRUCTURAL REINFORCEMENT

STRUCTURAL REPAIR KITS



**CONCRETE CRACK LOCK
KIT - 20 PACK WITH HIGH
STRENGTH ANCHORING
EPOXY PASTE**

SKU: FG20040



**KIT CRACK REPAIR
BIDIRECTIONAL 560GSM
12" X 8'**

SKU: FG20053



**KIT BOWED WALL REPAIR
UNIDIRECTIONAL VERTICAL
400GSM 6" X 8'**

SKU: FG20036

WATER PROOFING MEMBRANES

ACCESSORIES



BAKOR BLUESKIN ADHESIVE

SKU: BK101677



BAKOR POLY FAB

SKU: BKPF600



BAKOR POLYPROPYLENE PROTECTION BOARD

SKU: BK99031458



BAKOR YELLOW JACKET

SKU: BK99006876 (6" x 150') / BK99006875
(36" x 150')



CAGE FOR ROLLER - 9 1/2"

SKU: ZFR499N



HENRY 930-18 POLY-TAC

SKU: BK018621



MEAN CLEAN

SKU: DISTROMEAN5GAL



PACK OF 10 PAINT SLEEVES

SKU: Z9T15-10



PLASTIC DEEP TRAY - 2L

SKU: ZTR200



POLYBITUME 570-05

SKU: BK570S664 (300ml) / BK570S686 (850ml) / 694266611003 (10kg)



ROBUST CAULKING GUN FOR 300ML CARTRIDGES

SKU: 106617



SPLIT FOAM SLEEVE - 9" X 3/4"

SKU: Z9SF20



SUPER INDUSTRIAL STRIPPING GLOVE X-LARGE

SKU: 4003



TAMPICO FIBER BRUSH - 13" X 1" X 3"

SKU: 95006



THIROCO T20 - PLASTIC CEMENT

SKU: T20020



THIROCO T20W - PLASTIC CEMENT - WINTER GRADE

SKU: T20W20

SELF-ADHESIVE



BLUESKIN SA

SKU: BH200SA977



HENRY BLUESKIN WP200

SKU: HEWP200937

SOLVENT BASED



BAKOR AQUA-BLOC 770-06

SKU: BK77006070

THERMOSEALING MEMBRANES



BAKOR NP180 PP

SKU: BH180PP985

URETHANE BASED



HENRY CM100

SKU: HE78060073

WATER BASED



BAKOR AQUA-BLOC 720-38

SKU: BK72038074



IMPERMASHIELD DB EXPRESS

SKU: 48-BD-AXC-5



IMPERMASHIELD DB3 / DB10

SKU: 48-00300 (DB3) / 48-01000 (DB10)



IMPERMASHIELD R COAT

SKU: IMPERMAR5



IMPERMASHIELD R COAT DB

SKU: 1724-WPT-5 / 1724-WPT-55



IMPERMASHIELD SD SPRAY COAT

SKU: IMPERMASD55



IMPERMASHIELD T COAT

SKU: IMPERMAT5



IMPERMASHIELD T COAT DB

SKU: 48-BD-TG-5

DRAIN BOXES

GALVANIZED



DRAIN BOX - 16" X 16" X 12"

SKU: DBG1616



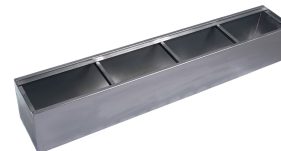
DRAIN BOX - 2'

SKU: CP24-12-12



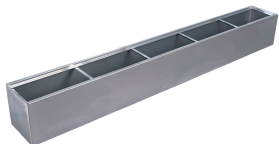
DRAIN BOX - 4'

SKU: CP48-12-12



DRAIN BOX - 6'

SKU: DBG72-12-12



DRAIN BOX - 8'

SKU: DBG96-12-12

PLASTIC



**ALUMINUM CHECKER
PLATE COVER - 18" X 24"**

SKU: CA1824



**FLOOR DRAIN - 12" X 12"
X 12"**

SKU: 1ZD1212



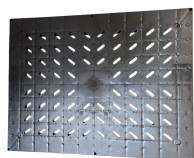
**FLOOR DRAIN - 18" X 24"
X 18"**

SKU: 1ZD1824P



**FLOOR DRAIN - 18" X 24"
X 25"**

SKU: 1ZD2425P



**NON-RADON-TIGHT COVER
- 18" X 24"**

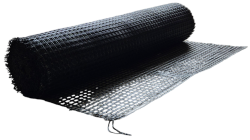
SKU: 4HCGH



**RADON-TIGHT COVER - 18"
X 24"**

SKU: 4HCVH

GEOSYNTHETICS



GEOMAX GEOGRID

SKU: GEOMAXGG4350



GEOMAX WOVEN GEOTEXTILE

SKU: GEOMAXW13350



GEOMAX NON WOVEN GEOTEXTILE

SKU: GNT12350 / GNT3350 / GNT6350

SUMP PUMP SYSTEMS

ACCESSORIES



DUAL FLOAT - STANDARD CONTROLLER

SKU: N/A



WIFI MODULE

SKU: PS-WIFI2

PITS



**18" X 30" RADON-PROOF
PIT**

SKU: SF30BA



**18" X 22" / 30" RADON-
PROOF PIT COVER**

SKU: SF2000E



**18" X 22" RADON-PROOF
PIT**

SKU: SF20



**20" X 24" CORRUGATED
PUMP PIT**

SKU: 1UCU025



**20" X 24" CORRUGATED
PUMP COVER**

SKU: 1UCV025

PUMPS



BACKUP COMBO PUMP

SKU: PSC22



CAST IRON PUMP

SKU: CIS-33V

WINDOW WELLS

ALL PRODUCTS



GEOMAX WOVEN GEOTEXTILE

SKU: GEOMAXW13350



GEOMAX NON WOVEN GEOTEXTILE

SKU: GNT12350 / GNT3350 / GNT6350



4" COUPLING

SKU: 1M0040



ALEMITE GASKET REPAIR KIT

SKU: 336523



ALEMITE GREASE GUN FOR POLYURETHANE INJECTION

SKU: 586-B



ALUMINUM CHECKER PLATE COVER - 18" X 24"

SKU: CA1824



BACKUP COMBO PUMP

SKU: PSC22



BAKOR 700-01

SKU: BK70001074



BAKOR AQUA-BLOC 720-38

SKU: BK72038074



BAKOR AQUA-BLOC 770-06

SKU: BK77006070



BAKOR BLUESKIN ADHESIVE

SKU: BK101677



BAKOR NP180 PP

SKU: BH180PP985



BAKOR POLY FAB

SKU: BKPF600



BAKOR POLYPROPYLENE PROTECTION BOARD

SKU: BK99031458



BAKOR YELLOW JACKET

SKU: BK99006876 (6' x 150') / BK99006875 (36' x 150')



BALL VALVE 1/8" X 1/8" FF THREADED BOTH SIDES

SKU: 14.1102



BLUESKIN SA

SKU: BH200SA977



BRASS FITTING FEMALE TO MALE PIPE ADAPTER 1/8" MALE TO 1/4" FEMALE

SKU: 33.1912



BRASS FITTING STREET TEE 1/8" FEMALE WITH TWO 1/8" FEMALE

SKU: 33.3410



CAGE FOR ROLLER - 9 1/2"

SKU: ZFR499N



CAST IRON PUMP

SKU: CIS-33V



CONCRETE CRACK LOCK KIT - 20 PACK WITH HIGH STRENGTH ANCHORING EPOXY PASTE

SKU: FG20040



CORNER INJECTOR

SKU: INJECTA-PCE50



CORRUGATED WINDOW WELLS

SKU: N/A



COUPLER FOR INJECTION

SKU: 600105



DELTA DRAIN

SKU: 22600014 / 22600015



DELTA DRY & LATH

SKU: N/A



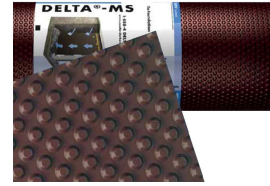
DELTA FASTNER

SKU: 22610005 / 22610006



DELTA MOLD STRIP

SKU: 22610021



DELTA MS

SKU: 22600001 / 22600002 / 22600003 / 22600004 / 22600005 / 22600006



DELTA SEALANT

SKU: 22610015



DELTA VENT S

SKU: N/A



DELTA VENT SA

SKU: N/A



DISTROCAN - JET SET 1-3 MIN

SKU: JETSET13



DISTROCAN - JET SET 3-5 MIN

SKU: JETSET35



DISTROCAN - JET SET 5-10 MIN

SKU: JETSET510



DRAIN BOX - 16" X 16" X 12"

SKU: DBG1616



DRAIN BOX - 2'

SKU: CP24-12-12



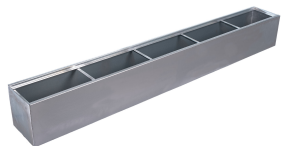
DRAIN BOX - 4'

SKU: CP48-12-12



DRAIN BOX - 6'

SKU: DBG72-12-12



DRAIN BOX - 8'

SKU: DBG96-12-12



DUAL CARTRIDGE RCF POLYURETHANE EXPANDING FOAM

SKU: FG20077



DUAL FLOAT - STANDARD CONTROLLER

SKU: N/A



EPICOL T

SKU: 120298



HENRY 930-18 POLY-TAC

SKU: BK018621



HENRY BLUESKIN WP200

SKU: HEWP200937



HENRY CM100

SKU: HE78060073



HOSE BARB TO MALE PIPE CONNECTOR 1/8" TO 1/8"

SKU: 33.4110



IMPERMASHIELD DB EXPRESS

SKU: 48-BD-AXC-5



IMPERMASHIELD DB3 / DB10

SKU: 48-00300 (DB3) / 48-01000 (DB10)



IMPERMASHIELD R COAT

SKU: IMPERMAR5



IMPERMASHIELD R COAT DB

SKU: 1724-WPT-5 / 1724-WPT-55



IMPERMASHIELD SD SPRAY COAT

SKU: IMPERMASD55



IMPERMASHIELD T COAT

SKU: IMPERMAT5



IMPERMASHIELD T COAT DB

SKU: 48-BD-TG-5



INJECTAPHOS PHOSPHORIC ACID SURFACE PREP - PROFESSIONAL CONCRETE CRACK REPAIR ENHANCER

SKU: INJECTAPHOS1L / INJECTAPHOS20L



INJECTION HOSE ADAPTER 90°

SKU: FU-3459-04-02



INJECTION HOSE ADAPTER STRAIGHT

SKU: FU-3269-04-02



INJECTION PACKER WITH ZERK

SKU: DISTROPACKNYL



KIT BOWED WALL REPAIR UNIDIRECTIONAL VERTICAL



**KIT CRACK REPAIR
BIDIRECTIONAL 560GSM
12" X 8'**

SKU: FG20053



400GSM 6" X 8'

SKU: FG20036

**LANDSCAPING NAILS -
SPIRAL**

SKU: CLOUSPLSP250



**LANDSCAPING NAILS -
COMMON**

SKU: CLOUSPLC50



**MALE CONNECTOR 1/4" TO
THREAD 1/8"**

SKU: 32.1156



MAPEI - PLANISEAL PLUG

SKU: 2437025



MAPEI - PLANITOP 23

SKU: 2758720



MAPEI - PLANITOP X

SKU: 2757423



MAPEI - PLANITOP XS

SKU: 2757323



MAPEI - RESFOAM 1KM

SKU: 2446120



MAPEI - RESFOAM HB 45

SKU: 2445958



MAPEI - RESFOAM HL 35

SKU: 2445619-1



MAPEI - RESFOAM PF

SKU: 2445419



MAPEI EPOJET

SKU: 1561144 (399ml) / 1561111KIT (11.35L)



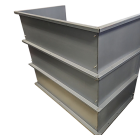
MAPEI MAPEFLEX P1 FT

SKU: 2UA1516253



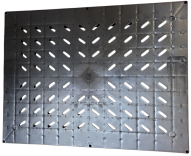
MEAN CLEAN

SKU: DISTROMEAN5GAL



MODULAR WINDOW WELLS

SKU: N/A



NON-RADON-TIGHT COVER - 18" X 24"

SKU: 4HCGH



NUT SETTER 5/16" NON- MAGNETIC FOR ZERKS

SKU: PM-869/4



NYLON TUBING 1/4" OD

SKU: 40.1140



PERFORATED 1/2" INJECTOR

SKU: INJECTA-PPE100



PLASTIC BORDER FOR PAVERS

SKU: N/A



PLASTIC DEEP TRAY - 2L

SKU: ZTR200



PLUG FOR INJECTOR

SKU: INJECTA-BE100



POLYBITUME 570-05

SKU: BK570S664 (300ml) / BK570S686
(850ml) / 694266611003 (10kg)



RADON-TIGHT COVER - 18" X 24"

SKU: 4HCVH



RCF EPOXY GUN DUAL CARTRIDGE

SKU: FG20023



RCF HIGH STRENGTH ANCHORING EPOXY PASTE

SKU: FG20075 (600ml) / FG20177 (2 Gal.)



RCF STRUCTURAL EPOXY INJECTION RESIN

SKU: FG20076



REDUCER MALE CONNECTOR 3/8" TO 1/4"

SKU: 32.3382



REDUCER MALE CONNECTOR 5/16" TO 1/4"

SKU: 32.3370



ROBUST CAULKING GUN FOR 300ML CARTRIDGES

SKU: 106617



RUBBER INJECTION PORTS

SKU: INJECTA-PRE1000



SPETEC GT350

SKU: 101888



SPETEC H100

SKU: 101895



SPETEC PUMP CLEANER

SKU: 103001



SPETEC SEAL F400

SKU: 101884



SPLIT FOAM SLEEVE - 9" X 3/4"

SKU: Z9SF20



STAINLESS STEEL SILICONE FLUID FILLED PRESSURE GAUGE - 0 - 1000 PSI - LM MOUNT

SKU: 62.6670



STAINLESS STEEL SILICONE FLUID FILLED PRESSURE GAUGE - 0 - 10000 PSI - LM MOUNT

SKU: 62.6695



STAINLESS STEEL SILICONE FLUID FILLED PRESSURE GAUGE - 0 - 4000 PSI - LM MOUNT

SKU: 62.6688



STATIC MIXER

SKU: INJECTASM1432 / INJECTASM3830



STOPAQ 2100 AQUASTOP

SKU: 103025



T-SHAPED INJECTOR

SKU: INJECTA-PTE100



TAMPICO FIBER BRUSH - 13" X 1" X 3"

SKU: 95006



TCT HOLE SAW

SKU: DISTROTCT325



THIROCO T-60

SKU: T60189



THIROCO T20 - PLASTIC CEMENT

SKU: T20020



THIROCO T20W - PLASTIC CEMENT - WINTER GRADE

SKU: T20W20



UNION MALE CONNECTOR 1/4" TO 1/4"

SKU: 32.2158



WIFI MODULE

SKU: PS-WIFI2

INDEX

1

18" x 22" / 30" Radon-Proof Pit Cover 48

18" x 22" Radon-Proof Pit 48

2

20" x 24" Corrugated Pump Cover 48

20" x 24" Corrugated Pump Pit 48

3

3" Tee 11

3"/ 4" Male Cap 11

3" Perforated (Type 2) 29

4

4" 5" 6" 8" Coupling 13

4" 5" 6" 8" Elbow 22 1/2° 13

4" 5" 6" 8" Elbow 45° 13

4" 5" 6" 8" Tee 13

4" 5" 6" 8" Wye 13

4" 6" 8" 90° Short Radius 13

4" 6" 8" Tee Wye 14

4" 90° Long Radius 14

4" Elbow, 45° 16

4" Perforated (Mega 3) 29

4" Perforated, 3 Hole 32

4" Threaded Plug 16

4" Wye 12

4" Cap, No Thread 15

4" Cleanout Chimney 11

4" Coupling 50

4" Coupling with Stopper 15

4" Elbow, 22 1/2° 15

4" Elbow, 45° 15

4" Elbow, 90° Long Turn 15
4" Elbow, 90° 11
4" Female Cap With Clip 11
4" Female Grate Cap 11
4" Fitting Cleanout 15
4" HDPE Pipe to PVC Pipe Adapter 12
4" Non-Perforated 29
4" Perforated (Type 2) 29
4" Perforated, 7 Hole 32
4" Push Fit Adapter 15
4" SOLFLO MAX Non-Perforated 29
4" SOLIFLEX Perforated (Type 3) 29
4" Tee 16
4" Tee-Wye 12, 16
4" Universal Drain Adapter 12
4" Wye 16
4" Female-Female Coupler 12
4" Non Perforated 32

A

Alemite Gasket Repair Kit 18, 50
Alemite Grease Gun for Polyurethane Injection 18, 50
Alemite Spring Repair Kit 18
Aluminum Checker Plate Cover - 18" x 24" 45, 50

B

Backup Combo Pump 49, 51
Bakor 700-01 8, 51
Bakor Aqua-Bloc 720-38 41, 51
Bakor Aqua-Bloc 770-06 38, 51
Bakor Blueskin Adhesive 34, 51
Bakor NP180 PP 39, 51
Bakor Poly Fab 34, 51
Bakor Polypropylene Protection Board 34, 51
Bakor Yellow Jacket 34, 52
Ball Valve 1/8" x 1/8" FF Threaded Both Sides 18, 52
Blueskin SA 37, 52
Box of 50 Professional Black Nitrile Gloves 18
Brass Fitting Female to Male Pipe Adapter 1/8" Male to 1/4" Female 18, 52

Brass Fitting Street Tee 1/8" Female with Two 1/8" Female 19, 52

C

Cage for Roller - 9 1/2" 6, 34, 52

Cast Iron Pump 49, 53

Cast Iron/Plastic/Steel to Cast Iron/Plastic/Steel 17

Concrete Crack Lock Kit - 20 Pack with High Strength Anchoring Epoxy Paste 33, 53

Concrete to Cast Iron/Plastic/Steel 17

Corner Injector 19, 53

Corrugated Window Wells 53

Coupler for Injection 19, 53

D

Delta Drain 10, 53

Delta Dry & Lath 10, 53

Delta Fastner 9, 53

Delta Mold Strip 9, 54

Delta MS 10, 54

Delta Sealant 9, 54

Delta Vent S 10, 54

Delta Vent SA 10, 54

Distrocan - Jet Set 1-3 Min 3, 54

Distrocan - Jet Set 3-5 Min 3, 54

Distrocan - Jet Set 5-10 Min 3, 54

Drain Box - 16" x 16" x 12" 43, 55

Drain Box - 2' 43, 55

Drain Box - 4' 43, 55

Drain Box - 6' 43, 55

Drain Box - 8' 43, 55

Dual Cartridge RCF Polyurethane Expanding Foam 19, 55

Dual Float - Standard Controller 47, 55

Ductile Iron to Cast Iron/Plastic/Steel 17

E

EPICOL T 23, 55

F

Floor Drain - 12" x 12" x 12" 45

Floor Drain - 18" x 24" x 18" 45

Floor Drain - 18" x 24" x 25" 45

G

GEOMAX Geogrid 46

GEOMAX Non Woven Geotextile 46, 50

GEOMAX Woven Geotextile 46, 50

H

Henry 930-18 Poly-TAC 34, 56

Henry Blueskin WP200 37, 56

Henry CM100 40, 56

Hose barb to male pipe connector 1/8" to 1/8" 19, 56

I

Impermashield DB Express 41, 56

Impermashield DB3 / DB10 41, 56

ImpermaShield R Coat 41, 56

Impermashield R Coat DB 41, 56

ImpermaShield SD Spray Coat 41, 57

ImpermaShield T Coat 42, 57

Impermashield T Coat DB 42, 57

Injectaphos Phosphoric Acid Surface Prep - Professional Concrete Crack Repair Enhancer 19, 57

Injection Hose Adapter 90° 20, 57

Injection hose adapter Straight 20, 57

Injection Hoses for Grease Guns 20

Injection Packer with Zerk 20, 57

K

Kit Bowed Wall Repair Unidirectional Vertical 400gsm 6" x 8' 33, 57

Kit Crack Repair Bidirectional 560GSM 12" x 8' 33, 58

L

Landscaping Nails - Spiral 28, 58

Landscaping Nails - Common 28, 58

M

Male Connector 1/4" to Thread 1/8" 20, 58

Mapei - Planiseal Plug 3, 58

Mapei - Planitop 23 3, 58

Mapei - Planitop X 3, 58

Mapei - Planitop XS 3, 58
MAPEI - RESFOAM 1KM 24, 26, 59
MAPEI - RESFOAM HB 45 24, 26, 59
MAPEI - RESFOAM HL 35 24, 26, 59
MAPEI - RESFOAM PF 24, 26, 59
Mapei Epojet 23, 59
Mapei Mapeflex P1 FT 5, 59
Mean Clean 35, 59
Modular Window Wells 59

N

Non-Radon-Tight Cover - 18" x 24" 45, 60
Nut Setter 5/16" Non-Magnetic for Zerks 20, 60
Nylon Tubing 1/4" OD 21, 60

P

Pack of 10 Paint Sleeves 35
Paint Sleeves - Pack of 10 6
Perforated 1/2" Injector 21, 60
Plastic Border for Pavers 28, 60
Plastic Deep Tray - 2L 6, 35, 60
Plug for Injector 21, 60
Polybitume 570-05 35, 60

R

Radon-Tight Cover - 18" x 24" 45, 61
RCF Epoxy Gun Dual Cartridge 21, 61
RCF High Strength Anchoring Epoxy Paste 23, 61
RCF Structural Epoxy Injection Resin 23, 61
Reducer Male Connector 3/8" to 1/4" 21, 61
Reducer Male Connector 5/16" to 1/4" 21, 61
Robust Caulking Gun for 300ml Cartridges 35, 61
Rubber injection ports 21, 61

S

SDR28 31
SDR35 31
SPETEC GEN ACC 24, 27
SPETEC GEN ACC FAST 24, 27

SPETEC GT350 24, 27, 62
SPETEC H100 24, 27, 62
SPETEC PUMP CLEANER 25, 27, 62
SPETEC SEAL F400 25, 27, 62
Split Foam Sleeve - 9" x 3/4" 6, 35, 62
Stainless Steel Silicone Fluid Filled Pressure Gauge - 0 - 1000 PSI - LM Mount 21, 62
Stainless Steel Silicone Fluid Filled Pressure Gauge - 0 - 10000 PSI - LM Mount 22, 62
Stainless Steel Silicone Fluid Filled Pressure Gauge - 0 - 4000 PSI - LM Mount 22, 62
Static Mixer 22, 63
STOPAQ 2100 AQUASTOP 22, 63
Super Industrial Stripping Glove X-Large 36

T

T-Shaped Injector 22, 63
Tampico Fiber Brush - 13" x 1" x 3" 2, 6, 36, 63
TCT Hole Saw 28, 63
Teflon 1/2" x 40' 22
Thiroco T-60 8, 63
Thiroco T20 - Plastic Cement 6, 36, 63
Thiroco T20W - Plastic Cement - Winter Grade 7, 36, 63

U

Union Male Connector 1/4" to 1/4" 22, 64

W

Wifi Module 47, 64

18" x 30" Radon-Proof Pit 48