



**DISTROCAN**



# CATALOGUE DE PRODUIT

- 📍 333 Rue St-HubertLaval, QC H7G 2Y5
- 📍 2855 Mnt Masson, Laval, QC H7B 1E3
- 📍 250 Boul. Industriel, Boucherville, QC J4B2X4

☎ 1-800-619-0916    ✉ info@distrocan.ca

[distrocan.ca](http://distrocan.ca)

# CEMENTITIOUS PRODUCTS

## ACCESSORIES



**HTS PE-85 POLYUREA JOINT FILL**

**SKU: PE85**



**SOUDAL SOUDASEAL AP SEALANT**

**SKU: N/A**



**TAMPICO FIBER BRUSH - 13"  
X 6.75" X 2"**

**SKU: DISTROTAMPICO511**

## MORTARS



### **DISTROCAN JET SET 1-3 MIN**

**SKU: JETSET13**



### **DISTROCAN JET SET 3-5 MIN**

**SKU: JETSET35**



### **DISTROCAN JET SET 5-10 MIN**

**SKU: JETSET510**



### **MAPEI PLANISEAL PLUG**

**SKU: 2437025**



### **MAPEI PLANITOP 23**

**SKU: 2758720**



### **MAPEI PLANITOP X**

**SKU: 2757423**



### **MAPEI PLANITOP XS**

**SKU: 2757323**

## SEALERS



**MAPEI MAPEFLEX P1 FT**

**SKU:** 2UA1516253

## SPECIALTY



**MAPEI MAPEFER 1K**

**SKU:** 2766105

# DAMP PROOFING PRODUCTS

## ACCESSORIES



**CAGE FOR ROLLER - 9 1/2"**

**SKU:** ZFR499N



**PAINT SLEEVES - PACK OF 10**

**SKU:** Z9T1510



**PLASTIC DEEP TRAY - 2L**

**SKU:** ZTR200



**SPLIT FOAM SLEEVE - 9" X 3/4"**

**SKU:** Z9SF20



**TAMPICO FIBER BRUSH - 13" X 6.75" X 2"**

**SKU:** DISTROTAMPICO511



**THIROCO T20**

**SKU:** T20020



## **THIROCO T20W**

**SKU: T20W20**

## SEALERS



**BAKOR 700-01**

**SKU:** BK70001074

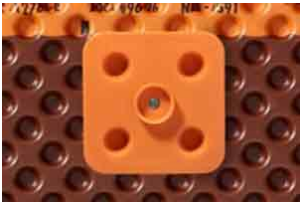


**THIROCO T-60**

**SKU:** T60189

## DELTA PRODUCTS

### ACCESSORIES



**DELTA FASTNER**

**SKU:** 22610005 / 22610006



**DELTA MOLD STRIP**

**SKU:** 22610021



**DELTA SEALANT**

**SKU:** 22610015

## MEMBRANES



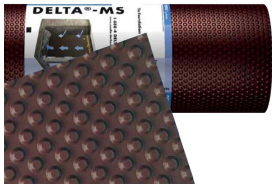
### DELTA DRAIN

SKU: 22600014 / 22600015



### DELTA DRY & LATH

SKU: N/A



### DELTA MS

SKU: 22600001 / 22600002 / 22600003 /  
22600004 / 22600005 / 22600006



### DELTA VENT S

SKU: N/A



### DELTA VENT SA

SKU: N/A

# EQUIPMENT

## PUMPS



**DESOI - ACRYLATE GEL PUMP**

**SKU: 17602**



**DESOI - AIRPOWER S25-2C PUMP**

**SKU: 17601**



**GRACO - GH 833 - GAS HYDRAULIC SPRAYER - WATERPROOFING MEMBRANES**

**SKU: 249617**



**GRACO - FINISHPRO GX 19 CORDLESS - POLYURETHANE INJECTION**

**SKU: 25U341**



**GRACO - FINISHPRO GX 19  
ELECTRIC- POLYURETHANE  
INJECTION**

**SKU:** 17F924



**SEALBOSS - PA 3000 EPOXY  
INJECTION PUMP**

**SKU:** PA3000

## FITTINGS

### HDPE



**3" TEE**

SKU: 1T0033



**3" / 4" MALE CAP**

SKU: 1B0035 / 1B0045



**4" CLEANOUT CHIMNEY**

SKU: 830004 / 2B100CG



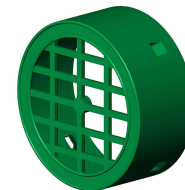
**4" ELBOW, 90°**

SKU: 1C0049



**4" FEMALE CAP WITH CLIP**

SKU: 2B100CV



**4" FEMALE GRATE CAP**

SKU: 1TTG04C



**4" HDPE PIPE TO PVC PIPE  
ADAPTER**

**SKU:** 1ADRC04



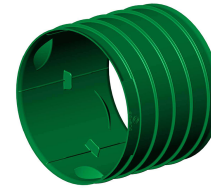
**4" TEE-WYE**

**SKU:** 1TY044



**4" UNIVERSAL DRAIN  
ADAPTER**

**SKU:** 1ADRCU04



**4" FEMALE-FEMALE COUPLER**

**SKU:** 3MCC004C



**4" WYE**

**SKU:** 1DY004

## PVC-MUNICIPAL



**4" 5" 6" 8" COUPLING**

**SKU:** 33ACOUP04GG



**4" 5" 6" 8" ELBOW 22 1/2°**

**SKU:** 21A2204GG



**4" 5" 6" 8" ELBOW 45°**

**SKU:** 21A4504GG



**4" 5" 6" 8" ELBOW 45°**

**SKU:** 22A4504GS



**4" 5" 6" 8" TEE**

**SKU:** 07A040404GGG



**4" 5" 6" 8" WYE**

**SKU:** 01A040404GGG



**4" 6" 8" 90° SHORT RADIUS**

**SKU:** 21A9004GG



**4" 6" 8" 90° SHORT RADIUS**

**SKU:** 22A9004GS



**4" 6" 8" TEE WYE**

**SKU:** 04A040404GGG



**4" 90° LONG RADIUS**

**SKU:** 21A9004LRGG

## PVC-PLUMBING



**4" CAP, NO THREAD**

**SKU:** P1604



**4" COUPLING WITH STOPPER**

**SKU:** P604



**4" ELBOW, 22 1/2°**

**SKU:** P1704



**4" ELBOW, 45°**

**SKU:** P404



**4" ELBOW, 90° LONG TURN**

**SKU:** P256



**4" FITTING CLEANOUT**

**SKU:** P1504



**4" FITTING CLEANOUT**

**SKU:** P1404



**4" PUSH FIT ADAPTER**

**SKU:** IC44P



**4" TEE**  
**SKU: P104**



**4" TEE-WYE**  
**SKU: P156**



**4" WYE**  
**SKU: P304**



**4" ELBOW, 45°**  
**SKU: P504**



**4" THREADED PLUG**  
**SKU: P1154**

## RUBBER COUPLINGS



**CAST IRON/PLASTIC/STEEL TO  
CAST IRON/PLASTIC/STEEL**

**SKU:** 1056-44



**CONCRETE TO CAST  
IRON/PLASTIC/STEEL**

**SKU:** 1006-44



**DUCTILE IRON TO CAST  
IRON/PLASTIC/STEEL**

**SKU:** 1051-44

# INJECTION PRODUCTS

## ACCESSORIES



### ALEMITE GASKET REPAIR KIT

SKU: 336523



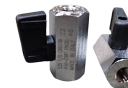
### ALEMITE GREASE GUN FOR POLYURETHANE INJECTION

SKU: 586-B



### ALEMITE SPRING REPAIR KIT

SKU: 393756-6



### BALL VALVE 1/8" X 1/8" FF THREADED BOTH SIDES

SKU: 14.1102



### BOX OF 50 PROFESSIONAL BLACK NITRILE GLOVES

SKU: 34606-M / 34606-XL



### BRASS FITTING FEMALE TO MALE PIPE ADAPTER 1/8"



**BRASS FITTING TEE 1/8"  
FEMALE WITH TWO 1/8"  
FEMALE**

**SKU:** 33.3410



**COUPLER FOR INJECTION**

**SKU:** 600105



**HOSE BARB TO MALE PIPE  
1/8" ID TO 1/8" MNPT**

**SKU:** 33.4110



**MALE TO 1/4" FEMALE**

**SKU:** 33.1912

**CORNER INJECTOR**

**SKU:** INJECTA-PCE50



**FEMALE CONNECTOR 1/4" TO  
THREAD 1/8"**

**SKU:** 32.1156



**INJECTAPHOS PHOSPHORIC  
ACID**

**SKU:** INJECTAPHOS1L / INJECTAPHOS20L



### INJECTION HOSE ADAPTER 90°

SKU: FU-3459-04-02



### INJECTION HOSE ADAPTER STRAIGHT

SKU: FU-3269-04-02



### INJECTION HOSES FOR GREASE GUNS

SKU: ECH-720-02MM35



### INJECTION PACKER WITH ZERK

SKU: DISTROPACKNYL / INJECTAPNP100



### NUT SETTER 5/16" NON-MAGNETIC FOR ZERKS

SKU: PM-869/4



### NYLON TUBING 1/4" OD

SKU: 40.1140



### PERFORATED 1/2" INJECTOR

SKU: INJECTA-PPE100



### PLUG FOR INJECTOR

SKU: INJECTA-BE100



### RCF DUAL CARTRIDGE POLYURETHANE EXPANDING FOAM

SKU: FG20077



### REDUCER FEMALE CONNECTOR

SKU: 32.3370 / 32.3379 / 32.3379



### RUBBER INJECTION PORTS

SKU: INJECTA-PRE1000



### SILICONE FLUID FILLED PRESSURE GAUGE

SKU: 62.6670 / 62.6688 / 62.6695



### STATIC MIXER

SKU: INJECTASM1432 / INJECTASM3830



### STOPAQ 2100 AQUASTOP

SKU: 103025



### T-SHAPED INJECTOR

SKU: INJECTA-PTE100



### TAJIMA HIGH-QUALITY DUAL CARTRIDGE RESIN GUN

SKU: CNV-DSP26



**TEFLON 1/2" X 40'**

**SKU:** 33.9080



**UNION FEMALE CONNECTOR  
1/4" TO 1/4"**

**SKU:** 32.2158

## EPOXY PRODUCTS



### MAPEI EPOJET

**SKU:** 1561144 (399ml) / 1561111KIT (11.35L)



### RCF HIGH STRENGTH ANCHORING EPOXY PASTE

**SKU:** FG20075 (600ml) / FG20177 (2 Gal.)



### RCF STRUCTURAL EPOXY INJECTION RESIN

**SKU:** FG20076



### RESIPLAST EPICOL T

**SKU:** 120298

# POLYURETHANE RESINS

## MAPEI



### MAPEI RESFOAM 1KM

SKU: 2446120



### MAPEI RESFOAM HB 45

SKU: 2445958



### MAPEI RESFOAM HL 35

SKU: 2445619-1



### MAPEI RESFOAM PF

SKU: 2445419

## SPETEC



### SPETEC F400

SKU: 101884



### SPETEC GEN ACC

SKU: 102426



### SPETEC GEN ACC FAST

SKU: 102428



### SPETEC GT350

SKU: 101888



### SPETEC H100

SKU: 101895



### SPETEC PUMP CLEANER

SKU: 103001

## LANDSCAPING

## ACCESSORIES



### LANDSCAPING NAILS - SPIRAL

SKU: CLOUSPLSP250



### LANDSCAPING NAILS - COMMON

SKU: CLOUSPLC50



### PLASTIC BORDER FOR PAVERS

SKU: N/A



### TCT HOLE SAW

SKU: DISTROTCT325

## PIPES

### HDPE



**3" PERFORATED (TYPE 2)**

**SKU:** 100304 / 100313



**4" PERFORATED (TYPE 2)**

**SKU:** 100442



**4" SOLIFLEX PERFORATED (TYPE 3)**

**SKU:** 120444



**4" NON-PERFORATED**

**SKU:** 100455



**4" SOLFLO MAX NON-PERFORATED**

**SKU:** 320420 / 320415



**4" PERFORATED (MEGA 3)**

**SKU:** 100461 / 100447 / 100445



## PVC-MUNICIPAL



### **SDR28**

**SKU:** SG2804014WH / SG2805014WH /  
SG2806014WH



### **SDR35**

**SKU:** SG3504014 / SG3505014 / SG3506014 /  
SG3508014

## PVC-PLUMBING



**4" PERFORATED, 7 HOLE**

**SKU:** SS3504010P7015



**4" PERFORATED, 3 HOLE**

**SKU:** SS04010P3012



**4" NON PERFORATED**

**SKU:** SS04010

# STRUCTURAL REINFORCEMENT

## ACCESSORIES



### **RCF DUAL CARTRIDGE EPOXY ADHESIVE**

**SKU:** FG20074

## PILING



### CAST IRON PILE POINT

**SKU:** DISTROPOINTE3 / DISTROPOINTE4



### PILING FOOT - FOUNDATION STABILIZATION

**SKU:** DISTROSAB3 / DISTROSAB4

## STEEL PLATES



### **STRUCTURAL FOUNDATION PLATE - CORNER**

**SKU:** DISTROPLCOIN



### **STRUCTURAL FOUNDATION PLATE - STRAIGHT**

**SKU:** DISTROPL60-6TROUS

## STRUCTURAL ANCHORING



### DEWALT AC100 GOLD

SKU: 8478SD-PWR



### HTS TX-3 URETHANE CONCRETE REPAIR

SKU: TX3-22OZ



### UCAN SDS PLUS PREMIUM - 4 CUTTER DRILL BITS

SKU: SDP



### UCAN TORPEDO® BOLT

SKU: UTB



### WEDGE ANCHORS - CARBON STEEL ZINC PLATED

SKU: WED

## STRUCTURAL REPAIR KITS



### RCF CONCRETE CRACK LOCK KIT

SKU: FG20040



### RCF KIT BOWED WALL REPAIR BIDIRECTIONAL

SKU: FG20031



### RCF KIT BOWED WALL REPAIR UNIDIRECTIONAL VERTICAL

SKU: FG20036



### RCF KIT CRACK REPAIR BIDIRECTIONAL

SKU: FG20053



### RCF KIT SILL PLATE BRACKET

SKU: FG20061



### RCF UNIDIRECTIONAL VERTICAL ROLL KIT

SKU: FG20060

# WATER PROOFING MEMBRANES

## ACCESSORIES



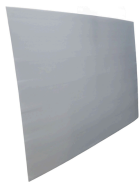
### BAKOR BLUESKIN ADHESIVE

SKU: BK101677



### BAKOR POLY FAB

SKU: BKPF600



### BAKOR POLYPROPYLENE PROTECTION BOARD

SKU: BK99031458



### BAKOR YELLOW JACKET

SKU: BK99006876 (6" x 150') / BK99006875 (36" x 150')



### CAGE FOR ROLLER - 9 1/2"

SKU: ZFR499N



### HENRY 930-18 POLY-TAC

SKU: BK018621



### IMPERMASHIELD DB EXPRESS

SKU: 48-BD-AXC-5



### IMPERMASHIELD DB3 / DB10

SKU: 48-00300 (DB3) / 48-01000 (DB10)



### MEAN CLEAN

SKU: DISTROMEAN5GAL



### PACK OF 10 PAINT SLEEVES

SKU: Z9T15-10



### PLASTIC DEEP TRAY - 2L

SKU: ZTR200



### POLYBITUME 570-05

SKU: BK570S664 (300ml) / BK570S686 (850ml) / 694266611003 (10kg)



### ROBUST CAULKING GUN FOR 300ML CARTRIDGES

SKU: 106617



### SPLIT FOAM SLEEVE - 9" X 3/4"

SKU: Z9SF20



## SUPER INDUSTRIAL STRIPPING GLOVE X-LARGE

SKU: 4003



## TAMPICO FIBER BRUSH - 13" X 6.75" X 2"

SKU: DISTROTAMPICO511



## THIROCO T20

SKU: T20020



## THIROCO T20W

SKU: T20W20



## TRELLIS DB

SKU: N/A

## SELF-ADHESIVE



**BLUESKIN SA**

**SKU:** BH200SA977



**HENRY BLUESKIN WP200**

**SKU:** HEWP200937

## SOLVENT BASED



**BAKOR AQUA-BLOC 770-06**

**SKU:** BK77006070

# THERMOSEALING MEMBRANES



**BAKOR NP180 PP**

**SKU:** BH180PP985

## URETHANE BASED



**HENRY CM100**

**SKU: HE78060073**

## WATER BASED



### BAKOR AQUA-BLOC 720-38

SKU: BK72038074



### IMPERMASHIELD R COAT

SKU: IMPERMAR5



### IMPERMASHIELD R COAT DB

SKU: 1724-WPT-5 / 1724-WPT-55



### IMPERMASHIELD T COAT DB

SKU: 48-BD-TG-5

## DRAIN BOXES

### GALVANIZED



**DRAIN BOX - 16" X 16" X 12"**

**SKU:** DBG1616



**DRAIN BOX - 2'**

**SKU:** CP24-12-12



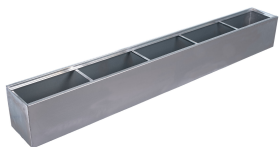
**DRAIN BOX - 4'**

**SKU:** CP48-12-12



**DRAIN BOX - 6'**

**SKU:** DBG72-12-12



**DRAIN BOX - 8'**

**SKU:** DBG96-12-12

## PLASTIC



**ALUMINUM CHECKER PLATE COVER - 18" X 24"**

SKU: CA1824



**FLOOR DRAIN - 12" X 12" X 12"**

SKU: 1ZD1212



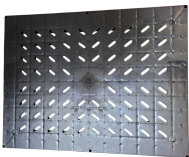
**FLOOR DRAIN - 18" X 24" X 18"**

SKU: 1ZD1824P



**FLOOR DRAIN - 18" X 24" X 25"**

SKU: 1ZD2425P



**NON-RADON-TIGHT COVER - 18" X 24"**

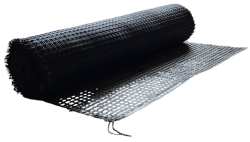
SKU: 4HCGH



**RADON-TIGHT COVER - 18" X 24"**

SKU: 4HCVH

## GEOSYNTHETICS



### **GEOMAX GEOGRID**

**SKU:** GEOMAXGG4350



### **GEOMAX WOVEN GEOTEXTILE**

**SKU:** GEOMAXW13350



### **GEOMAX NON WOVEN GEOTEXTILE**

**SKU:** GNT12350 / GNT3350 / GNT6350

# SUMP PUMP SYSTEMS

## ACCESSORIES



### DUAL FLOAT - STANDARD CONTROLLER

SKU: N/A



### WIFI MODULE

SKU: PS-WIFI2

## PITS



**18" X 30" RADON-PROOF PIT**

**SKU:** SF30BA



**18" X 22" / 30" RADON-PROOF PIT COVER**

**SKU:** SF2000E



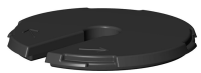
**18" X 22" RADON-PROOF PIT**

**SKU:** SF20



**20" X 24" CORRUGATED PUMP PIT**

**SKU:** 1UCU025



**20" X 24" CORRUGATED PUMP COVER**

**SKU:** 1UCV025

## PUMPS



### **BACKUP COMBO PUMP**

**SKU: PSC22**



### **CAST IRON PUMP**

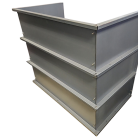
**SKU: CIS-33V**

# WINDOW WELLS



## CORRUGATED WINDOW WELLS

SKU: N/A



## MODULAR WINDOW WELLS

SKU: N/A

## ALL PRODUCTS



### **GEOMAX WOVEN GEOTEXTILE**

SKU: GEOMAXW13350



### **GEOMAX NON WOVEN GEOTEXTILE**

SKU: GNT12350 / GNT3350 / GNT6350



### **4" COUPLING**

SKU: 1M0040



### **4" NON PERFORATED**

SKU: SS04010



### **ALEMITE GASKET REPAIR KIT**

SKU: 336523



### **ALEMITE GREASE GUN FOR POLYURETHANE INJECTION**

SKU: 586-B



**ALUMINUM CHECKER PLATE COVER - 18" X 24"**

**SKU:** CA1824



**BACKUP COMBO PUMP**

**SKU:** PSC22



**BAKOR 700-01**

**SKU:** BK70001074



**BAKOR AQUA-BLOC 720-38**

**SKU:** BK72038074



**BAKOR AQUA-BLOC 770-06**

**SKU:** BK77006070



**BAKOR BLUESKIN ADHESIVE**

**SKU:** BK101677



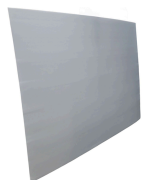
**BAKOR NP180 PP**

**SKU:** BH180PP985



**BAKOR POLY FAB**

**SKU:** BKPF600



**BAKOR POLYPROPYLENE PROTECTION BOARD**

**SKU:** BK99031458



**BAKOR YELLOW JACKET**

**SKU:** BK99006876 (6" x 150') / BK99006875 (36" x 150')



**BALL VALVE 1/8" X 1/8" FF  
THREADED BOTH SIDES**

**SKU:** 14.1102



**BLUESKIN SA**

**SKU:** BH200SA977



**BRASS FITTING FEMALE TO  
MALE PIPE ADAPTER 1/8"  
MALE TO 1/4" FEMALE**

**SKU:** 33.1912



**BRASS FITTING TEE 1/8"  
FEMALE WITH TWO 1/8"  
FEMALE**

**SKU:** 33.3410



**CAGE FOR ROLLER - 9 1/2"**

**SKU:** ZFR499N



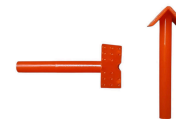
**CAST IRON PILE POINT**

**SKU:** DISTROPOINTE3 / DISTROPOINTE4



**CAST IRON PUMP**

**SKU:** CIS-33V



**CORNER INJECTOR**

**SKU:** INJECTA-PCE50



## CORRUGATED WINDOW WELLS

SKU: N/A



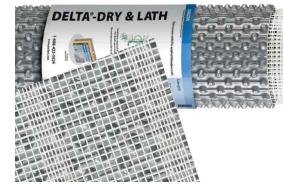
## COUPLER FOR INJECTION

SKU: 600105



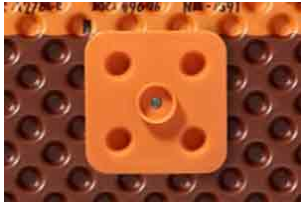
## DELTA DRAIN

SKU: 22600014 / 22600015



## DELTA DRY & LATH

SKU: N/A



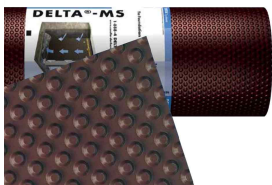
## DELTA FASTNER

SKU: 22610005 / 22610006



## DELTA MOLD STRIP

SKU: 22610021



## DELTA MS

SKU: 22600001 / 22600002 / 22600003 /  
22600004 / 22600005 / 22600006



## DELTA SEALANT

SKU: 22610015



### DELTA VENT S

SKU: N/A



### DELTA VENT SA

SKU: N/A



### DESOI - ACRYLATE GEL PUMP

SKU: 17602



### DESOI - AIRPOWER S25-2C PUMP

SKU: 17601



### DEWALT AC100 GOLD

SKU: 8478SD-PWR



### DISTROCAN JET SET 1-3 MIN

SKU: JETSET13



### DISTROCAN JET SET 3-5 MIN

SKU: JETSET35



### DISTROCAN JET SET 5-10 MIN

SKU: JETSET510



### DRAIN BOX - 16" X 16" X 12"

SKU: DBG1616



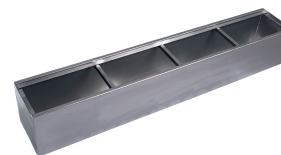
### DRAIN BOX - 2'

SKU: CP24-12-12



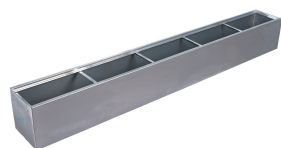
**DRAIN BOX - 4'**

**SKU:** CP48-12-12



**DRAIN BOX - 6'**

**SKU:** DBG72-12-12



**DRAIN BOX - 8'**

**SKU:** DBG96-12-12



**DUAL FLOAT - STANDARD CONTROLLER**

**SKU:** N/A



**FEMALE CONNECTOR 1/4" TO THREAD 1/8"**

**SKU:** 32.1156



**GRACO - GH 833 - GAS HYDRAULIC SPRAYER - WATERPROOFING MEMBRANES**

**SKU:** 249617



**GRACO - FINISHPRO GX 19 CORDLESS - POLYURETHANE INJECTION**

**SKU:** 25U341



**GRACO - FINISHPRO GX 19 ELECTRIC- POLYURETHANE INJECTION**

**SKU:** 17F924



### HENRY 930-18 POLY-TAC

SKU: BK018621



### HENRY BLUESKIN WP200

SKU: HEWP200937



### HENRY CM100

SKU: HE78060073



### HOSE BARB TO MALE PIPE 1/8" ID TO 1/8" MNPT

SKU: 33.4110



### HTS PE-85 POLYUREA JOINT FILL

SKU: PE85



### HTS TX-3 URETHANE CONCRETE REPAIR

SKU: TX3-22OZ



### IMPERMASHIELD DB EXPRESS

SKU: 48-BD-AXC-5



### IMPERMASHIELD DB3 / DB10

SKU: 48-00300 (DB3) / 48-01000 (DB10)



### IMPERMASHIELD R COAT

SKU: IMPERMAR5



### IMPERMASHIELD R COAT DB

SKU: 1724-WPT-5 / 1724-WPT-55



### IMPERMASHIELD T COAT DB

SKU: 48-BD-TG-5



### INJECTAPHOS PHOSPHORIC ACID

SKU: INJECTAPHOS1L / INJECTAPHOS20L



### INJECTION HOSE ADAPTER 90°

SKU: FU-3459-04-02



### INJECTION HOSE ADAPTER STRAIGHT

SKU: FU-3269-04-02



### INJECTION PACKER WITH ZERK

SKU: DISTROPACKNYL / INJECTAPNP100



### LANDSCAPING NAILS - SPIRAL

SKU: CLOUSPLSP250



**LANDSCAPING NAILS -  
COMMON**

**SKU:** CLOUSPLC50



**MAPEI EPOJET**

**SKU:** 1561144 (399ml) / 1561111KIT (11.35L)



**MAPEI MAPEFER 1K**

**SKU:** 2766105



**MAPEI MAPEFLEX P1 FT**

**SKU:** 2UA1516253



**MAPEI PLANISEAL PLUG**

**SKU:** 2437025



**MAPEI PLANITOP 23**

**SKU:** 2758720



**MAPEI PLANITOP X**

**SKU:** 2757423



**MAPEI PLANITOP XS**

**SKU:** 2757323



**MAPEI RESFOAM 1KM**

**SKU:** 2446120



**MAPEI RESFOAM HB 45**

**SKU:** 2445958



**MAPEI RESFOAM HL 35**

**SKU:** 2445619-1



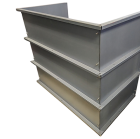
**MAPEI RESFOAM PF**

**SKU:** 2445419



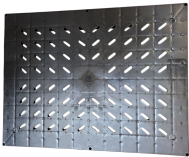
**MEAN CLEAN**

**SKU:** DISTROMEAN5GAL



**MODULAR WINDOW WELLS**

**SKU:** N/A



**NON-RADON-TIGHT COVER -  
18" X 24"**

**SKU:** 4HCGH



**NUT SETTER 5/16" NON-  
MAGNETIC FOR ZERKS**

**SKU:** PM-869/4



**NYLON TUBING 1/4" OD**

**SKU:** 40.1140



**PERFORATED 1/2" INJECTOR**

**SKU:** INJECTA-PPE100



**PILING FOOT - FOUNDATION  
STABILIZATION**

**SKU:** DISTROSAB3 / DISTROSAB4



**PLASTIC BORDER FOR  
PAVERS**

**SKU:** N/A



### PLASTIC DEEP TRAY - 2L

SKU: ZTR200



### POLYBITUME 570-05

SKU: BK570S664 (300ml) / BK570S686 (850ml) / 694266611003 (10kg)



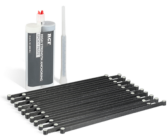
### PLUG FOR INJECTOR

SKU: INJECTA-BE100



### RADON-TIGHT COVER - 18" X 24"

SKU: 4HCVH



### RCF CONCRETE CRACK LOCK KIT

SKU: FG20040



### RCF DUAL CARTRIDGE EPOXY ADHESIVE

SKU: FG20074



### RCF DUAL CARTRIDGE POLYURETHANE EXPANDING FOAM

SKU: FG20077



### RCF HIGH STRENGTH ANCHORING EPOXY PASTE

SKU: FG20075 (600ml) / FG20177 (2 Gal.)



### RCF KIT BOWED WALL REPAIR BIDIRECTIONAL

SKU: FG20031



### RCF KIT BOWED WALL REPAIR UNIDIRECTIONAL VERTICAL

SKU: FG20036



### RCF KIT CRACK REPAIR BIDIRECTIONAL

SKU: FG20053



### RCF KIT SILL PLATE BRACKET

SKU: FG20061



### RCF STRUCTURAL EPOXY INJECTION RESIN

SKU: FG20076



### RCF UNIDIRECTIONAL VERTICAL ROLL KIT

SKU: FG20060



### REDUCER FEMALE CONNECTOR

SKU: 32.3370 / 32.3379 / 32.3379



### RESIPLAST EPICOL T

SKU: 120298



## ROBUST CAULKING GUN FOR 300ML CARTRIDGES

SKU: 106617



## RUBBER INJECTION PORTS

SKU: INJECTA-PRE1000



## SEALBOSS - PA 3000 EPOXY INJECTION PUMP

SKU: PA3000



## SILICONE FLUID FILLED PRESSURE GAUGE

SKU: 62.6670 / 62.6688 / 62.6695



## SOUDAL SOUDASEAL AP SEALANT

SKU: N/A



## SPETEC F400

SKU: 101884



## SPETEC GT350

SKU: 101888



## SPETEC H100

SKU: 101895



### SPETEC PUMP CLEANER

SKU: 103001



### SPLIT FOAM SLEEVE - 9" X 3/4"

SKU: Z9SF20



### STATIC MIXER

SKU: INJECTASM1432 / INJECTASM3830



### STOPAQ 2100 AQUASTOP

SKU: 103025



### STRUCTURAL FOUNDATION PLATE - CORNER

SKU: DISTROPLCOIN



### STRUCTURAL FOUNDATION PLATE - STRAIGHT

SKU: DISTROPL60-6TROUS



### T-SHAPED INJECTOR

SKU: INJECTA-PTE100



### TAJIMA HIGH-QUALITY DUAL CARTRIDGE RESIN GUN

SKU: CNV-DSP26



**TAMPICO FIBER BRUSH - 13"  
X 6.75" X 2"**

**SKU:** DISTROTAMPICO511



**TCT HOLE SAW**

**SKU:** DISTROTCT325



**TEFLON 1/2" X 40'**

**SKU:** 33.9080



**THIROCO T-60**

**SKU:** T60189



**THIROCO T20**

**SKU:** T20020



**THIROCO T20W**

**SKU:** T20W20



**UCAN SDS PLUS PREMIUM - 4  
CUTTER DRILL BITS**

**SKU:** SDP



**UCAN TORPEDO® BOLT**

**SKU:** UTB



**UNION FEMALE CONNECTOR  
1/4" TO 1/4"**

**SKU:** 32.2158



**WEDGE ANCHORS - CARBON  
STEEL ZINC PLATED**

**SKU:** WED



**WIFI MODULE**

**SKU:** PS-WIFI2

# INDEX

## 1

18" x 22" / 30" Radon-Proof Pit Cover 50

18" x 22" Radon-Proof Pit 50

## 2

20" x 24" Corrugated Pump Cover 50

20" x 24" Corrugated Pump Pit 50

## 3

3" Tee 13

3"/ 4" Male Cap 13

3" Perforated (Type 2) 29

## 4

4" 5" 6" 8" Coupling 15

4" 5" 6" 8" Elbow 22 1/2° 15

4" 5" 6" 8" Elbow 45° 15

4" 5" 6" 8" Tee 15

4" 5" 6" 8" Wye 15

4" 6" 8" 90° Short Radius 15

4" 6" 8" Tee Wye 16

4" 90° Long Radius 16

4" Elbow, 45° 18

4" Perforated (Mega 3) 29

4" Perforated, 3 Hole 32

4" Threaded Plug 18

4" Wye 14

4" Cap, No Thread 17

4" Cleanout Chimney 13

4" Coupling 53

4" Coupling with Stopper 17

4" Elbow, 22 1/2° 17

4" Elbow, 45° 17

4" Elbow, 90° Long Turn 17  
4" Elbow, 90° 13  
4" Female Cap With Clip 13  
4" Female Grate Cap 13  
4" Fitting Cleanout 17  
4" HDPE Pipe to PVC Pipe Adapter 14  
4" Non-Perforated 29  
4" Perforated (Type 2) 29  
4" Perforated, 7 Hole 32  
4" Push Fit Adapter 17  
4" SOLFLO MAX Non-Perforated 29  
4" SOLIFLEX Perforated (Type 3) 29  
4" Tee 18  
4" Tee-Wye 14, 18  
4" Universal Drain Adapter 14  
4" Wye 18  
4" Female-Female Coupler 14  
4" Non Perforated 32, 53

## **A**

Alemite Gasket Repair Kit 20, 53  
Alemite Grease Gun for Polyurethane Injection 20, 53  
Alemite Spring Repair Kit 20  
Aluminum Checker Plate Cover - 18" x 24" 47, 53

## **B**

Backup Combo Pump 51, 53  
Bakor 700-01 8, 54  
Bakor Aqua-Bloc 720-38 45, 54  
Bakor Aqua-Bloc 770-06 42, 54  
Bakor Blueskin Adhesive 38, 54  
Bakor NP180 PP 43, 54  
Bakor Poly Fab 38, 54  
Bakor Polypropylene Protection Board 38, 54  
Bakor Yellow Jacket 38, 54  
Ball Valve 1/8" x 1/8" FF Threaded Both Sides 20, 55  
Blueskin SA 41, 55  
Box of 50 Professional Black Nitrile Gloves 20  
Brass Fitting Female to Male Pipe Adapter 1/8" Male to 1/4" Female 20, 55

Brass Fitting Tee 1/8" Female with Two 1/8" Female 21, 55

## C

Cage for Roller - 9 1/2" 6, 38, 55

Cast Iron Pile Point 34, 55

Cast Iron Pump 51, 55

Cast Iron/Plastic/Steel to Cast Iron/Plastic/Steel 19

Concrete to Cast Iron/Plastic/Steel 19

Corner Injector 21, 55

Corrugated Window Wells 52, 56

Coupler for Injection 21, 56

## D

Delta Drain 10, 56

Delta Dry & Lath 10, 56

Delta Fastner 9, 56

Delta Mold Strip 9, 56

Delta MS 10, 56

Delta Sealant 9, 56

Delta Vent S 10, 56

Delta Vent SA 10, 56

Desoi - Acrylate Gel Pump 11, 57

Desoi - AirPower S25-2C Pump 11, 57

Dewalt AC100 GOLD 36, 57

Distrocan Jet Set 1-3 Min 3, 57

Distrocan Jet Set 3-5 Min 3, 57

Distrocan Jet Set 5-10 Min 3, 57

Drain Box - 16" x 16" x 12" 46, 57

Drain Box - 2' 46, 57

Drain Box - 4' 46, 58

Drain Box - 6' 46, 58

Drain Box - 8' 46, 58

Dual Float - Standard Controller 49, 58

Ductile Iron to Cast Iron/Plastic/Steel 19

## F

Female Connector 1/4" to Thread 1/8" 21, 58

Floor Drain - 12" x 12" x 12" 47

Floor Drain - 18" x 24" x 18" 47

Floor Drain - 18" x 24" x 25" 47

## **G**

**GEOMAX** Geogrid 48

**GEOMAX** Non Woven Geotextile 48, 53

**GEOMAX** Woven Geotextile 48, 53

Graco - GH 833 - Gas Hydraulic Sprayer - Waterproofing Membranes 11, 58

Graco - Finishpro GX 19 Cordless - Polyurethane Injection 11, 58

Graco - Finishpro GX 19 Electric- Polyurethane Injection 12, 58

## **H**

Henry 930-18 Poly-TAC 38, 59

Henry Blueskin WP200 41, 59

Henry CM100 44, 59

Hose Barb to Male Pipe 1/8" ID to 1/8" MNPT 21, 59

HTS PE-85 Polyurea Joint Fill 2, 59

HTS TX-3 Urethane Concrete Repair 36, 59

## **I**

Impermashield DB Express 39, 59

Impermashield DB3 / DB10 39, 59

ImpermaShield R Coat 45, 59

Impermashield R Coat DB 45, 59

Impermashield T Coat DB 45, 60

Injectaphos Phosphoric Acid 21, 60

Injection Hose Adapter 90° 21, 60

Injection hose adapter Straight 21, 60

Injection Hoses for Grease Guns 22

Injection Packer with Zerk 22, 60

## **L**

Landscaping Nails - Spiral 28, 60

Landscaping Nails - Common 28, 60

## **M**

Mapei Epojet 25, 60

Mapei Mapefer 1K 5, 61

Mapei Mapeflex P1 FT 4, 61

Mapei Planiseal Plug 3, 61

Mapei Planitop 23 3, 61  
Mapei Planitop X 3, 61  
Mapei Planitop XS 3, 61  
Mapei Resfoam 1KM 26, 61  
Mapei Resfoam HB 45 26, 61  
Mapei Resfoam HL 35 26, 62  
Mapei Resfoam PF 26, 62  
Mean Clean 39, 62  
Modular Window Wells 52, 62

## **N**

Non-Radon-Tight Cover - 18" x 24" 47, 62  
Nut Setter 5/16" Non-Magnetic for Zerks 22, 62  
Nylon Tubing 1/4" OD 22, 62

## **P**

Pack of 10 Paint Sleeves 39  
Paint Sleeves - Pack of 10 6  
Perforated 1/2" Injector 22, 62  
Piling Foot - Foundation Stabilization 34, 62  
Plastic Border for Pavers 28, 62  
Plastic Deep Tray - 2L 6, 39, 63  
Plug for Injector 22, 63  
Polybitume 570-05 39, 63

## **R**

Radon-Tight Cover - 18" x 24" 47, 63  
RCF Concrete Crack Lock Kit 37, 63  
RCF Dual Cartridge Epoxy Adhesive 33, 63  
RCF Dual Cartridge Polyurethane Expanding Foam 22, 63  
RCF High Strength Anchoring Epoxy Paste 25, 63  
RCF Kit Bowed Wall Repair Bidirectional 37, 64  
RCF Kit Bowed Wall Repair Unidirectional Vertical 37, 64  
RCF Kit Crack Repair Bidirectional 37, 64  
RCF Kit Sill Plate Bracket 37, 64  
RCF Structural Epoxy Injection Resin 25, 64  
RCF Unidirectional Vertical Roll Kit 37, 64  
Reducer Female Connector 22, 64  
Resiplast Epicol T 25, 64

Robust Caulking Gun for 300ml Cartridges 39, 65  
Rubber injection ports 23, 65

## **S**

SDR28 31  
SDR35 31  
SealBoss - PA 3000 Epoxy Injection Pump 12, 65  
Silicone Fluid Filled Pressure Gauge 23, 65  
Soudal Soudaseal AP Sealant 2, 65  
Spetec F400 27, 65  
Spetec Gen Acc 27  
Spetec Gen Acc Fast 27  
Spetec GT350 27, 65  
Spetec H100 27, 65  
Spetec Pump Cleaner 27, 66  
Split Foam Sleeve - 9" x 3/4" 6, 39, 66  
Static Mixer 23, 66  
Stopaq 2100 Aquastop 23, 66  
Structural Foundation Plate - Corner 35, 66  
Structural Foundation Plate - Straight 35, 66  
Super Industrial Stripping Glove X-Large 39

## **T**

T-Shaped Injector 23, 66  
Tajima High-Quality Dual Cartridge Resin Gun 23, 66  
Tampico Fiber Brush - 13" x 6.75" x 2" 2, 6, 39, 67  
TCT Hole Saw 28, 67  
Teflon 1/2" x 40' 24, 67  
Thiroco T-60 8, 67  
Thiroco T20 6, 40, 67  
Thiroco T20W 7, 40, 67  
TRELIS DB 40

## **U**

UCAN SDS Plus Premium - 4 Cutter Drill Bits 36, 67  
UCAN TORPEDO® Bolt 36, 67  
Union Female Connector 1/4" to 1/4" 24, 67

## **W**

Wedge Anchors - Carbon Steel Zinc Plated 36, 67

Wifi Module 49, 68

18" x 30" Radon-Proof Pit 50