



**DISTROCAN**



# CATALOGUE DE PRODUIT

2025

333 St-Hubert, Laval, QC, H7G2Y5  
1-800-619-0916 • [info@distrocan.ca](mailto:info@distrocan.ca)

[distrocan.ca](http://distrocan.ca)

# CEMENTITIOUS PRODUCTS

## ACCESSORIES



**TAMPICO FIBER BRUSH -  
13" X 6.75" X 2"**

**SKU:** DISTROTAMPICO511

## MORTARS



### **DISTROCAN - JET SET 1-3 MIN**

**SKU:** JETSET13



### **DISTROCAN - JET SET 3-5 MIN**

**SKU:** JETSET35



### **DISTROCAN - JET SET 5-10 MIN**

**SKU:** JETSET510



### **MAPEI - PLANISEAL PLUG**

**SKU:** 2437025



### **MAPEI - PLANITOP 23**

**SKU:** 2758720



### **MAPEI - PLANITOP X**

**SKU:** 2757423



## MAPEI - PLANITOP XS

**SKU:** 2757323



## SEALERS



### **MAPEI MAPEFLEX P1 FT**

**SKU:** 2UA1516253

## SPECIALTY



### **MAPEFER 1K - ANTI-CORROSION MORTAR FOR REINFORCEMENT RODS**

**SKU:** 2766105

# DAMP PROOFING PRODUCTS

## ACCESSORIES



**CAGE FOR ROLLER - 9 1/2"**

**SKU: ZFR499N**



**PAINT SLEEVES - PACK OF 10**

**SKU: Z9T1510**



**PLASTIC DEEP TRAY - 2L**

**SKU: ZTR200**



**SPLIT FOAM SLEEVE - 9" X 3/4"**

**SKU: Z9SF20**



**TAMPICO FIBER BRUSH -  
13" X 6.75" X 2"**

**SKU:** DISTROTAMPICO511



**THIROCO T20 - PLASTIC  
CEMENT**

**SKU:** T20020



**THIROCO T20W - PLASTIC  
CEMENT - WINTER GRADE**

**SKU:** T20W20

## SEALERS



**BAKOR 700-01**

**SKU:** BK70001074

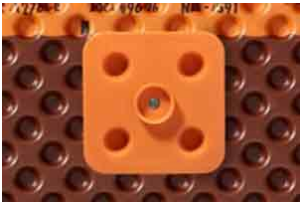


**THIROCO T-60**

**SKU:** T60189

## DELTA PRODUCTS

### ACCESSORIES



**DELTA FASTNER**

**SKU:** 22610005 / 22610006



**DELTA MOLD STRIP**

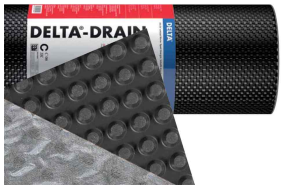
**SKU:** 22610021



**DELTA SEALANT**

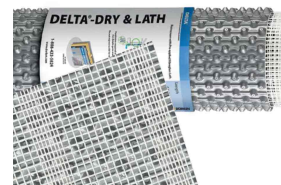
**SKU:** 22610015

## MEMBRANES



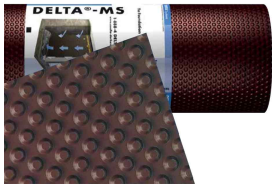
### DELTA DRAIN

SKU: 22600014 / 22600015



### DELTA DRY & LATH

SKU: N/A



### DELTA MS

SKU: 22600001 / 22600002 / 22600003 /  
22600004 / 22600005 / 22600006



### DELTA VENT S

SKU: N/A



### DELTA VENT SA

SKU: N/A

## EQUIPMENT

### PUMPS



**GRACO - FINISHPRO GX 19  
CORDLESS -  
POLYURETHANE INJECTION**

**SKU:** 25U341



**GRACO - FINISHPRO GX 19  
ELECTRIC -  
POLYURETHANE INJECTION**

**SKU:** 17F924



**GRACO GH 833 GAS  
HYDRAULIC SPRAYER -  
WATERPROOFING  
MEMBRANES**

**SKU:** 249617



# FITTINGS

## HDPE



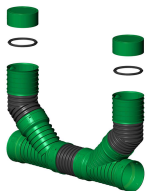
**3" TEE**

SKU: 1T0033



**3" / 4" MALE CAP**

SKU: 1B0035 / 1B0045



**4" CLEANOUT CHIMNEY**

SKU: 830004 / 2B100CG



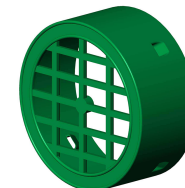
**4" ELBOW, 90°**

SKU: 1C0049



**4" FEMALE CAP WITH CLIP**

SKU: 2B100CV



**4" FEMALE GRATE CAP**

SKU: 1TTG04C



**4" HDPE PIPE TO PVC PIPE  
ADAPTER**

**SKU:** 1ADRC04



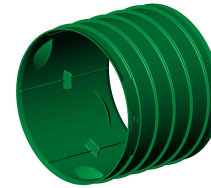
**4" TEE-WYE**

**SKU:** 1TY044



**4" UNIVERSAL DRAIN  
ADAPTER**

**SKU:** 1ADRCU04



**4" FEMALE-FEMALE  
COUPLER**

**SKU:** 3MCC004C



**4" WYE**

**SKU:** 1DY004

## PVC-MUNICIPAL



**4" 5" 6" 8" COUPLING**

**SKU:** 33ACOUP04GG



**4" 5" 6" 8" ELBOW 22 1/2°**

**SKU:** 21A2204GG



**4" 5" 6" 8" ELBOW 45°**

**SKU:** 21A4504GG



**4" 5" 6" 8" ELBOW 45°**

**SKU:** 22A4504GS



**4" 5" 6" 8" TEE**

**SKU:** 07A040404GGG



**4" 5" 6" 8" WYE**

**SKU:** 01A040404GGG



**4" 6" 8" 90° SHORT  
RADIUS**

**SKU:** 21A9004GG



**4" 6" 8" 90° SHORT  
RADIUS**

**SKU:** 22A9004GS



**4" 6" 8" TEE WYE**

**SKU:** 04A040404GGG



**4" 90° LONG RADIUS**

**SKU:** 21A9004LRGG

## PVC-PLUMBING



**4" CAP, NO THREAD**

**SKU:** P1604



**4" COUPLING WITH STOPPER**

**SKU:** P604



**4" ELBOW, 22 1/2°**

**SKU:** P1704



**4" ELBOW, 45°**

**SKU:** P404



**4" ELBOW, 90° LONG TURN**

**SKU:** P256



**4" FITTING CLEANOUT**

**SKU:** P1504



### 4" FITTING CLEANOUT

SKU: P1404



### 4" PUSH FIT ADAPTER

SKU: IC44P



### 4" TEE

SKU: P104



### 4" TEE-WYE

SKU: P156



### 4" WYE

SKU: P304



### 4" ELBOW, 45°

SKU: P504



### 4" THREADED PLUG

SKU: P1154

## RUBBER COUPLINGS



**CAST IRON/PLASTIC/STEEL  
TO CAST  
IRON/PLASTIC/STEEL**

**SKU:** 1056-44



**CONCRETE TO CAST  
IRON/PLASTIC/STEEL**

**SKU:** 1006-44



**DUCTILE IRON TO CAST  
IRON/PLASTIC/STEEL**

**SKU:** 1051-44

# INJECTION PRODUCTS

## ACCESSORIES



### ALEMITE GASKET REPAIR KIT

SKU: 336523



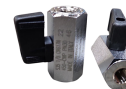
### ALEMITE GREASE GUN FOR POLYURETHANE INJECTION

SKU: 586-B



### ALEMITE SPRING REPAIR KIT

SKU: 393756-6



### BALL VALVE 1/8" X 1/8" FF THREADED BOTH SIDES

SKU: 14.1102





## BOX OF 50 PROFESSIONAL BLACK NITRILE GLOVES

SKU: 34606-M / 34606-XL



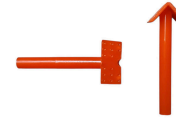
## BRASS FITTING FEMALE TO MALE PIPE ADAPTER 1/8" MALE TO 1/4" FEMALE

SKU: 33.1912



## BRASS FITTING STREET TEE 1/8" FEMALE WITH TWO 1/8" FEMALE

SKU: 33.3410



## CORNER INJECTOR

SKU: INJECTA-PCE50



## COUPLER FOR INJECTION

SKU: 600105



## FEMALE CONNECTOR 1/4" TO THREAD 1/8"

SKU: 32.1156



## HOSE BARB TO MALE PIPE CONNECTOR 1/8" TO 1/8"

SKU: 33.4110



## INJECTAPHOS PHOSPHORIC ACID SURFACE PREP - PROFESSIONAL CONCRETE



## **INJECTION HOSE ADAPTER 90°**

**SKU:** FU-3459-04-02



## **CRACK REPAIR ENHANCER**

**SKU:** INJECTAPHOS1L / INJECTAPHOS20L

**SKU:** FU-3269-04-02



## **INJECTION HOSES FOR GREASE GUNS**

**SKU:** ECH-720-02MM35



## **INJECTION PACKER WITH ZERK**

**SKU:** DISTROPACKNYL



## **NUT SETTER 5/16" NON- MAGNETIC FOR ZERKS**

**SKU:** PM-869/4



## **NYLON TUBING 1/4" OD**

**SKU:** 40.1140



## PERFORATED 1/2" INJECTOR

SKU: INJECTA-PPE100



## PLUG FOR INJECTOR

SKU: INJECTA-BE100



## RCF DUAL CARTRIDGE POLYURETHANE EXPANDING FOAM

SKU: FG20077



## RCF EPOXY GUN DUAL CARTRIDGE

SKU: FG20023



## REDUCER FEMALE CONNECTOR

SKU: 32.3370 / 32.3379 / 32.3379



## RUBBER INJECTION PORTS

SKU: INJECTA-PRE1000



## STAINLESS STEEL SILICONE FLUID FILLED PRESSURE GAUGE - 0 - 1000 PSI - LM MOUNT

SKU: 62.6670



## STAINLESS STEEL SILICONE FLUID FILLED PRESSURE GAUGE - 0 - 10000 PSI - LM MOUNT

SKU: 62.6695



**STAINLESS STEEL  
SILICONE FLUID FILLED  
PRESSURE GAUGE - 0 -  
4000 PSI - LM MOUNT**

**SKU:** 62.6688



**STATIC MIXER**

**SKU:** INJECTASM1432 / INJECTASM3830



**STOPAQ 2100 AQUASTOP**

**SKU:** 103025



**T-SHAPED INJECTOR**

**SKU:** INJECTA-PTE100



**TAJIMA HIGH-QUALITY  
DUAL CARTRIDGE RESIN  
GUN**

**SKU:** CNV-DSP26



**TEFLON 1/2" X 40'**

**SKU:** 33.9080



## **UNION FEMALE CONNECTOR 1/4" TO 1/4"**

**SKU:** 32.2158

## EPOXY PRODUCTS



### EPICOL T

**SKU:** 120298



### MAPEI EPOJET

**SKU:** 1561144 (399ml) / 1561111KIT (11.35L)



### RCF HIGH STRENGTH ANCHORING EPOXY PASTE

**SKU:** FG20075 (600ml) / FG20177 (2 Gal.)



### RCF STRUCTURAL EPOXY INJECTION RESIN

**SKU:** FG20076

## POLYURETHANE RESINS



**MAPEI - RESFOAM 1KM**

**SKU: 2446120**



**MAPEI - RESFOAM HB 45**

**SKU: 2445958**



**MAPEI - RESFOAM HL 35**

**SKU: 2445619-1**



**MAPEI - RESFOAM PF**

**SKU: 2445419**



**SPETEC GEN ACC**

**SKU: 102426**



**SPETEC GEN ACC FAST**

**SKU: 102428**



**SPETEC GT350**

**SKU: 101888**



**SPETEC H100**

**SKU: 101895**



## **SPETEC PUMP CLEANER**

**SKU:** 103001



## **SPETEC SEAL F400**

**SKU:** 101884



## POLYURETHANE RESINS MAPEI



**MAPEI - RESFOAM 1KM**

**SKU:** 2446120



**MAPEI - RESFOAM HB 45**

**SKU:** 2445958



**MAPEI - RESFOAM HL 35**

**SKU:** 2445619-1



**MAPEI - RESFOAM PF**

**SKU:** 2445419

## POLYURETHANE RESINS SPETEC



### SPETEC GEN ACC

SKU: 102426



### SPETEC GEN ACC FAST

SKU: 102428



### SPETEC GT350

SKU: 101888



### SPETEC H100

SKU: 101895



### SPETEC PUMP CLEANER

SKU: 103001



### SPETEC SEAL F400

SKU: 101884

## LANDSCAPING

## ACCESSORIES



### LANDSCAPING NAILS - SPIRAL

SKU: CLOUSPLSP250



### LANDSCAPING NAILS - COMMON

SKU: CLOUSPLC50



### PLASTIC BORDER FOR PAVERS

SKU: N/A



### TCT HOLE SAW

SKU: DISTROTCT325

# PIPES

## HDPE



**3" PERFORATED (TYPE 2)**

SKU: 100304 / 100313



**4" NON-PERFORATED**

SKU: 100455



**4" PERFORATED (TYPE 2)**

SKU: 100442



**4" SOLFLO MAX NON-PERFORATED**

SKU: 320420 / 320415



**4" SOLIFLEX PERFORATED (TYPE 3)**

SKU: 120444



**4" PERFORATED (MEGA 3)**

SKU: 100461 / 100447 / 100445



## PVC-MUNICIPAL



### SDR28

**SKU:** SG2804014WH / SG2805014WH /  
SG2806014WH



### SDR35

**SKU:** SG3504014 / SG3505014 / SG3506014 /  
SG3508014

## PVC-PLUMBING



**4" PERFORATED, 7 HOLE**

**SKU:** SS3504010P7015



**4" PERFORATED, 3 HOLE**

**SKU:** SS04010P3012



**4" NON PERFORATED**

**SKU:** SS04010

# STRUCTURAL REINFORCEMENT

## ACCESSORIES



### **RCF DUAL CARTRIDGE EPOXY ADHESIVE**

**SKU:** FG20074



# PILING



## CAST IRON PILE POINT

**SKU:** DISTROPOINTE3 / DISTROPOINTE4



## PILING FOOT - FOUNDATION STABILIZATION

**SKU:** DISTROSAB3 / DISTROSAB4

## STEEL PLATES



### STRUCTURAL FOUNDATION PLATE - CORNER

**SKU:** DISTROPLCOIN



### STRUCTURAL FOUNDATION PLATE - STRAIGHT

**SKU:** DISTROPL60-6TROUS

## STRUCTURAL ANCHORING



**UCAN SDS PLUS PREMIUM  
- 4 CUTTER DRILL BITS**

**SKU:** SDP



**UCAN TORPEDO® BOLT -  
CARBON STEEL  
MECHANICAL GALVANIZED**

**SKU:** UTB



**WEDGE ANCHORS -  
CARBON STEEL ZINC  
PLATED**

**SKU:** WED

## STRUCTURAL REPAIR KITS



**RCF CONCRETE CRACK  
LOCK KIT - 20 PACK WITH  
HIGH STRENGTH  
ANCHORING EPOXY PASTE**

**SKU:** FG20040



**RCF KIT BOWED WALL  
REPAIR BIDIRECTIONAL  
560GSM 5.5" X 8'**

**SKU:** FG20031



**RCF KIT BOWED WALL  
REPAIR UNIDIRECTIONAL  
VERTICAL 400GSM 6" X 8'**

**SKU:** FG20036



**RCF KIT CRACK REPAIR  
BIDIRECTIONAL 560GSM  
12" X 8'**

**SKU:** FG20053



**RCF KIT SILL PLATE  
BRACKET**

**SKU:** FG20061



**RCF UNIDIRECTIONAL  
VERTICAL ROLL KIT - 400  
GSM, 12K TOW, 6" WIDTH**

**SKU:** FG20060



# WATER PROOFING MEMBRANES

## ACCESSORIES



### BAKOR BLUESKIN ADHESIVE

SKU: BK101677



### BAKOR POLY FAB

SKU: BKPF600



### BAKOR POLYPROPYLENE PROTECTION BOARD

SKU: BK99031458



### BAKOR YELLOW JACKET

SKU: BK99006876 (6'' x 150') / BK99006875  
(36'' x 150')



## CAGE FOR ROLLER - 9 1/2"

SKU: ZFR499N



## HENRY 930-18 POLY-TAC

SKU: BK018621



## MEAN CLEAN

SKU: DISTROMEAN5GAL



## PACK OF 10 PAINT SLEEVES

SKU: Z9T15-10



## PLASTIC DEEP TRAY - 2L

SKU: ZTR200



## POLYBITUME 570-05

SKU: BK570S664 (300ml) / BK570S686 (850ml) / 694266611003 (10kg)



## ROBUST CAULKING GUN FOR 300ML CARTRIDGES

SKU: 106617



## SPLIT FOAM SLEEVE - 9" X 3/4"

SKU: Z9SF20



## SUPER INDUSTRIAL STRIPPING GLOVE X-LARGE

SKU: 4003



## THIROCO T20 - PLASTIC CEMENT

SKU: T20020



## TAMPICO FIBER BRUSH - 13" X 6.75" X 2"

SKU: DISTROTAMPICO511



## THIROCO T20W - PLASTIC CEMENT - WINTER GRADE

SKU: T20W20



## SELF-ADHESIVE



### **BLUESKIN SA**

**SKU:** BH200SA977



### **HENRY BLUESKIN WP200**

**SKU:** HEWP200937

## SOLVENT BASED



**BAKOR AQUA-BLOC 770-06**

**SKU:** BK77006070

# THERMOSEALING MEMBRANES



**BAKOR NP180 PP**

**SKU:** BH180PP985

## URETHANE BASED



**HENRY CM100**

**SKU:** HE78060073

## WATER BASED



### BAKOR AQUA-BLOC 720-38

SKU: BK72038074



### IMPERMASHIELD DB EXPRESS

SKU: 48-BD-AXC-5



### IMPERMASHIELD DB3 / DB10

SKU: 48-00300 (DB3) / 48-01000 (DB10)



### IMPERMASHIELD R COAT

SKU: IMPERMAR5



### IMPERMASHIELD R COAT DB

SKU: 1724-WPT-5 / 1724-WPT-55



### IMPERMASHIELD T COAT

SKU: IMPERMAT5



## **IMPERMASHIELD T COAT DB**

**SKU:** 48-BD-TG-5

## DRAIN BOXES

### GALVANIZED



**DRAIN BOX - 16" X 16" X 12"**

**SKU:** DBG1616



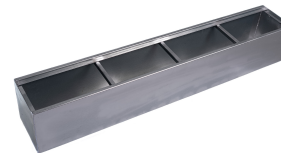
**DRAIN BOX - 2'**

**SKU:** CP24-12-12



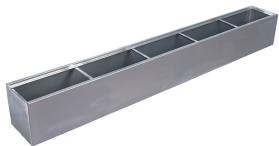
**DRAIN BOX - 4'**

**SKU:** CP48-12-12



**DRAIN BOX - 6'**

**SKU:** DBG72-12-12



**DRAIN BOX - 8'**

**SKU:** DBG96-12-12





## PLASTIC



**ALUMINUM CHECKER  
PLATE COVER - 18" X 24"**

**SKU:** CA1824



**FLOOR DRAIN - 12" X 12"  
X 12"**

**SKU:** 1ZD1212



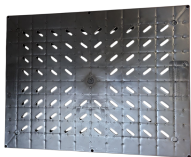
**FLOOR DRAIN - 18" X 24"  
X 18"**

**SKU:** 1ZD1824P



**FLOOR DRAIN - 18" X 24"  
X 25"**

**SKU:** 1ZD2425P



**NON-RADON-TIGHT COVER  
- 18" X 24"**

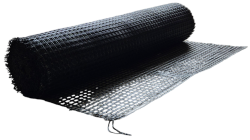
**SKU:** 4HCGH



**RADON-TIGHT COVER - 18"  
X 24"**

**SKU:** 4HCVH

# GEOSYNTHETICS



## **GEOMAX GEOGRID**

**SKU:** GEOMAXGG4350



## **GEOMAX WOVEN GEOTEXTILE**

**SKU:** GEOMAXW13350



## **GEOMAX NON WOVEN GEOTEXTILE**

**SKU:** GNT12350 / GNT3350 / GNT6350

# SUMP PUMP SYSTEMS

## ACCESSORIES



### DUAL FLOAT - STANDARD CONTROLLER

SKU: N/A



### WIFI MODULE

SKU: PS-WIFI2

## PITS



**18" X 30" RADON-PROOF  
PIT**

**SKU:** SF30BA



**18" X 22" / 30" RADON-  
PROOF PIT COVER**

**SKU:** SF2000E



**18" X 22" RADON-PROOF  
PIT**

**SKU:** SF20



**20" X 24" CORRUGATED  
PUMP PIT**

**SKU:** 1UCU025



**20" X 24" CORRUGATED  
PUMP COVER**

**SKU:** 1UCV025

# PUMPS



## BACKUP COMBO PUMP

SKU: PSC22



## CAST IRON PUMP

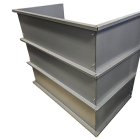
SKU: CIS-33V

# WINDOW WELLS



## **CORRUGATED WINDOW WELLS**

**SKU: N/A**



## **MODULAR WINDOW WELLS**

**SKU: N/A**

## ALL PRODUCTS



### **GEOMAX WOVEN GEOTEXTILE**

**SKU:** GEOMAXW13350



### **GEOMAX NON WOVEN GEOTEXTILE**

**SKU:** GNT12350 / GNT3350 / GNT6350



### **4" COUPLING**

**SKU:** 1M0040



### **4" NON PERFORATED**

**SKU:** SS04010



### **ALEMITE GASKET REPAIR KIT**

**SKU:** 336523



### **ALEMITE GREASE GUN FOR POLYURETHANE INJECTION**

**SKU:** 586-B



## ALUMINUM CHECKER PLATE COVER - 18" X 24"

SKU: CA1824



## BACKUP COMBO PUMP

SKU: PSC22



## BAKOR 700-01

SKU: BK70001074



## BAKOR AQUA-BLOC 720-38

SKU: BK72038074



## BAKOR AQUA-BLOC 770-06

SKU: BK77006070



## BAKOR BLUESKIN ADHESIVE

SKU: BK101677



## BAKOR NP180 PP

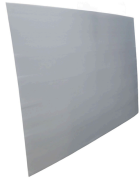
SKU: BH180PP985



## BAKOR POLY FAB

SKU: BKPF600





## BAKOR POLYPROPYLENE PROTECTION BOARD

SKU: BK99031458



## BAKOR YELLOW JACKET

SKU: BK99006876 (6" x 150') / BK99006875 (36" x 150')



## BALL VALVE 1/8" X 1/8" FF THREADED BOTH SIDES

SKU: 14.1102



## BLUESKIN SA

SKU: BH200SA977



## BRASS FITTING FEMALE TO MALE PIPE ADAPTER 1/8" MALE TO 1/4" FEMALE

SKU: 33.1912



## BRASS FITTING STREET TEE 1/8" FEMALE WITH TWO 1/8" FEMALE

SKU: 33.3410



## CAGE FOR ROLLER - 9 1/2"

SKU: ZFR499N



## CAST IRON PILE POINT

SKU: DISTROPOINTE3 / DISTROPOINTE4



## CAST IRON PUMP

SKU: CIS-33V



## CORNER INJECTOR

SKU: INJECTA-PCE50



## CORRUGATED WINDOW WELLS

SKU: N/A



## COUPLER FOR INJECTION

SKU: 600105



## DELTA DRAIN

SKU: 22600014 / 22600015



## DELTA DRY & LATH

SKU: N/A



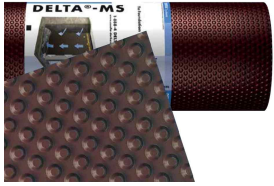
## DELTA FASTNER

SKU: 22610005 / 22610006



## DELTA MOLD STRIP

SKU: 22610021



## DELTA MS

SKU: 22600001 / 22600002 / 22600003 / 22600004 / 22600005 / 22600006



## DELTA SEALANT

SKU: 22610015



## DELTA VENT S

SKU: N/A



## DELTA VENT SA

SKU: N/A



## DISTROCAN - JET SET 1-3 MIN

SKU: JETSET13



## DISTROCAN - JET SET 3-5 MIN

SKU: JETSET35



## DISTROCAN - JET SET 5-10 MIN

SKU: JETSET510



## DRAIN BOX - 16" X 16" X 12"

SKU: DBG1616



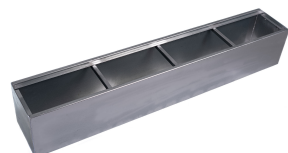
### **DRAIN BOX - 2'**

**SKU:** CP24-12-12



### **DRAIN BOX - 4'**

**SKU:** CP48-12-12



### **DRAIN BOX - 6'**

**SKU:** DBG72-12-12



### **DRAIN BOX - 8'**

**SKU:** DBG96-12-12



### **DUAL FLOAT - STANDARD CONTROLLER**

**SKU:** N/A



### **EPICOL T**

**SKU:** 120298



### **FEMALE CONNECTOR 1/4" TO THREAD 1/8"**

**SKU:** 32.1156



### **GRACO - FINISHPRO GX 19 CORDLESS - POLYURETHANE INJECTION**

**SKU:** 25U341



## GRACO - FINISHPRO GX 19 ELECTRIC - POLYURETHANE INJECTION

SKU: 17F924



## GRACO GH 833 GAS HYDRAULIC SPRAYER - WATERPROOFING MEMBRANES

SKU: 249617



## HENRY 930-18 POLY-TAC

SKU: BK018621



## HENRY BLUESKIN WP200

SKU: HEWP200937



## HENRY CM100

SKU: HE78060073



## HOSE BARB TO MALE PIPE CONNECTOR 1/8" TO 1/8"

SKU: 33.4110



## IMPERMASHIELD DB EXPRESS

SKU: 48-BD-AXC-5



## IMPERMASHIELD DB3 / DB10

SKU: 48-00300 (DB3) / 48-01000 (DB10)



## IMPERMASHIELD R COAT

SKU: IMPERMAR5



## IMPERMASHIELD R COAT DB

SKU: 1724-WPT-5 / 1724-WPT-55



## IMPERMASHIELD T COAT

SKU: IMPERMAT5



## IMPERMASHIELD T COAT DB

SKU: 48-BD-TG-5



## INJECTAPHOS PHOSPHORIC ACID SURFACE PREP - PROFESSIONAL CONCRETE CRACK REPAIR ENHANCER

SKU: INJECTAPHOS1L / INJECTAPHOS20L



## INJECTION HOSE ADAPTER 90°

SKU: FU-3459-04-02



## INJECTION HOSE ADAPTER STRAIGHT

SKU: FU-3269-04-02



## INJECTION PACKER WITH ZERK

SKU: DISTROPACKNYL



## LANDSCAPING NAILS - SPIRAL

SKU: CLOUSPLSP250



## LANDSCAPING NAILS - COMMON

SKU: CLOUSPLC50



## MAPEFER 1K - ANTI-CORROSION MORTAR FOR REINFORCEMENT RODS

SKU: 2766105



## MAPEI - PLANISEAL PLUG

SKU: 2437025



## MAPEI - PLANITOP 23

SKU: 2758720



## MAPEI - PLANITOP X

SKU: 2757423



## MAPEI - PLANITOP XS

SKU: 2757323



## MAPEI - RESFOAM 1KM

SKU: 2446120



## MAPEI - RESFOAM HB 45

SKU: 2445958



## MAPEI - RESFOAM HL 35

SKU: 2445619-1



## MAPEI - RESFOAM PF

SKU: 2445419



## MAPEI EPOJET

SKU: 1561144 (399ml) / 1561111KIT (11.35L)



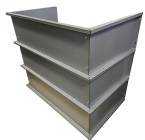
## MAPEI MAPEFLEX P1 FT

SKU: 2UA1516253



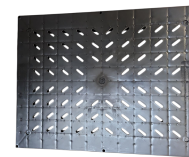
## MEAN CLEAN

SKU: DISTROMEAN5GAL



## MODULAR WINDOW WELLS

SKU: N/A



## NON-RADON-TIGHT COVER - 18" X 24"

SKU: 4HCGH





## NUT SETTER 5/16" NON-MAGNETIC FOR ZERKS

SKU: PM-869/4



## NYLON TUBING 1/4" OD

SKU: 40.1140



## PERFORATED 1/2" INJECTOR

SKU: INJECTA-PPE100



## PILING FOOT - FOUNDATION STABILIZATION

SKU: DISTROSAB3 / DISTROSAB4



## PLASTIC BORDER FOR PAVERS

SKU: N/A



## PLASTIC DEEP TRAY - 2L

SKU: ZTR200



## PLUG FOR INJECTOR

SKU: INJECTA-BE100



## POLYBITUME 570-05

SKU: BK570S664 (300ml) / BK570S686 (850ml) / 694266611003 (10kg)



## **RADON-TIGHT COVER - 18" X 24"**

**SKU:** 4HCVH



## **RCF CONCRETE CRACK LOCK KIT - 20 PACK WITH HIGH STRENGTH ANCHORING EPOXY PASTE**

**SKU:** FG20040



## **RCF DUAL CARTRIDGE EPOXY ADHESIVE**

**SKU:** FG20074



## **RCF DUAL CARTRIDGE POLYURETHANE EXPANDING FOAM**

**SKU:** FG20077



## **RCF EPOXY GUN DUAL CARTRIDGE**

**SKU:** FG20023



## **RCF HIGH STRENGTH ANCHORING EPOXY PASTE**

**SKU:** FG20075 (600ml) / FG20177 (2 Gal.)



## **RCF KIT BOWED WALL REPAIR BIDIRECTIONAL**



## **RCF KIT BOWED WALL REPAIR UNIDIRECTIONAL**

## 560GSM 5.5" X 8'

SKU: FG20031

## VERTICAL 400GSM 6" X 8'

SKU: FG20036



## RCF KIT CRACK REPAIR BIDIRECTIONAL 560GSM 12" X 8'

SKU: FG20053



## RCF KIT SILL PLATE BRACKET

SKU: FG20061



## RCF STRUCTURAL EPOXY INJECTION RESIN

SKU: FG20076



## RCF UNIDIRECTIONAL VERTICAL ROLL KIT - 400 GSM, 12K TOW, 6" WIDTH

SKU: FG20060



## REDUCER FEMALE CONNECTOR

SKU: 32.3370 / 32.3379 / 32.3379



## ROBUST CAULKING GUN FOR 300ML CARTRIDGES

SKU: 106617



## RUBBER INJECTION PORTS

SKU: INJECTA-PRE1000



## SPETEC GT350

SKU: 101888



## SPETEC H100

SKU: 101895



## SPETEC PUMP CLEANER

SKU: 103001



## SPETEC SEAL F400

SKU: 101884



## SPLIT FOAM SLEEVE - 9" X 3/4"

SKU: Z9SF20



## STAINLESS STEEL SILICONE FLUID FILLED PRESSURE GAUGE - 0 - 1000 PSI - LM MOUNT

SKU: 62.6670



## STAINLESS STEEL SILICONE FLUID FILLED PRESSURE GAUGE - 0 - 10000 PSI - LM MOUNT

SKU: 62.6695



**STAINLESS STEEL  
SILICONE FLUID FILLED  
PRESSURE GAUGE - 0 -  
4000 PSI - LM MOUNT**

**SKU:** 62.6688



**STATIC MIXER**

**SKU:** INJECTASM1432 / INJECTASM3830



**STOPAQ 2100 AQUASTOP**

**SKU:** 103025



**STRUCTURAL FOUNDATION  
PLATE - CORNER**

**SKU:** DISTROPLCOIN



**STRUCTURAL FOUNDATION  
PLATE - STRAIGHT**

**SKU:** DISTROPL60-6TROUS



**T-SHAPED INJECTOR**

**SKU:** INJECTA-PTE100



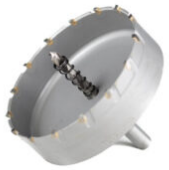
**TAJIMA HIGH-QUALITY  
DUAL CARTRIDGE RESIN  
GUN**

**SKU:** CNV-DSP26



**TAMPICO FIBER BRUSH -  
13" X 6.75" X 2"**

**SKU:** DISTROTAMPICO511



## TCT HOLE SAW

SKU: DISTROTCT325



## TEFLON 1/2" X 40'

SKU: 33.9080



## THIROCO T-60

SKU: T60189



## THIROCO T20 - PLASTIC CEMENT

SKU: T20020



## THIROCO T20W - PLASTIC CEMENT - WINTER GRADE

SKU: T20W20



## UCAN SDS PLUS PREMIUM - 4 CUTTER DRILL BITS

SKU: SDP



## UCAN TORPEDO® BOLT - CARBON STEEL MECHANICAL GALVANIZED

SKU: UTB



## UNION FEMALE CONNECTOR 1/4" TO 1/4"

SKU: 32.2158



## WEDGE ANCHORS - CARBON STEEL ZINC PLATED

**SKU:** WED



## WIFI MODULE

**SKU:** PS-WIFI2

# INDEX

## 1

18" x 22" / 30" Radon-Proof Pit Cover 56

18" x 22" Radon-Proof Pit 56

## 2

20" x 24" Corrugated Pump Cover 56

20" x 24" Corrugated Pump Pit 56

## 3

3" Tee 13

3"/ 4" Male Cap 13

3" Perforated (Type 2) 32

## 4

4" 5" 6" 8" Coupling 15

4" 5" 6" 8" Elbow 22 1/2° 15

4" 5" 6" 8" Elbow 45° 15

4" 5" 6" 8" Tee 15

4" 5" 6" 8" Wye 15

4" 6" 8" 90° Short Radius 15

4" 6" 8" Tee Wye 16

4" 90° Long Radius 16

4" Elbow, 45° 18

4" Perforated (Mega 3) 32

4" Perforated, 3 Hole 35

4" Threaded Plug 18

4" Wye 14

4" Cap, No Thread 17

4" Cleanout Chimney 13

4" Coupling 59

4" Coupling with Stopper 17

4" Elbow, 22 1/2° 17

4" Elbow, 45° 17



4" Elbow, 90° Long Turn 17  
4" Elbow, 90° 13  
4" Female Cap With Clip 13  
4" Female Grate Cap 13  
4" Fitting Cleanout 17  
4" HDPE Pipe to PVC Pipe Adapter 14  
4" Non-Perforated 32  
4" Perforated (Type 2) 32  
4" Perforated, 7 Hole 35  
4" Push Fit Adapter 17  
4" SOLFLO MAX Non-Perforated 32  
4" SOLIFLEX Perforated (Type 3) 32  
4" Tee 18  
4" Tee-Wye 14, 18  
4" Universal Drain Adapter 14  
4" Wye 18  
4" Female-Female Coupler 14  
4" Non Perforated 35, 59

## **A**

Alemite Gasket Repair Kit 20, 59  
Alemite Grease Gun for Polyurethane Injection 20, 59  
Alemite Spring Repair Kit 20  
Aluminum Checker Plate Cover - 18" x 24" 53, 59

## **B**

Backup Combo Pump 57, 59  
Bakor 700-01 9, 60  
Bakor Aqua-Bloc 720-38 49, 60  
Bakor Aqua-Bloc 770-06 46, 60  
Bakor Blueskin Adhesive 42, 60  
Bakor NP180 PP 47, 60  
Bakor Poly Fab 42, 60  
Bakor Polypropylene Protection Board 42, 60  
Bakor Yellow Jacket 42, 60  
Ball Valve 1/8" x 1/8" FF Threaded Both Sides 20, 61  
Blueskin SA 45, 61  
Box of 50 Professional Black Nitrile Gloves 20  
Brass Fitting Female to Male Pipe Adapter 1/8" Male to 1/4" Female 20, 61

Brass Fitting Street Tee 1/8" Female with Two 1/8" Female 21, 61

## C

Cage for Roller - 9 1/2" 7, 42, 61

Cast Iron Pile Point 37, 61

Cast Iron Pump 57, 62

Cast Iron/Plastic/Steel to Cast Iron/Plastic/Steel 19

Concrete to Cast Iron/Plastic/Steel 19

Corner Injector 21, 62

Corrugated Window Wells 58, 62

Coupler for Injection 21, 62

## D

Delta Drain 11, 62

Delta Dry & Lath 11, 62

Delta Fastner 10, 62

Delta Mold Strip 10, 62

Delta MS 11, 62

Delta Sealant 10, 62

Delta Vent S 11, 63

Delta Vent SA 11, 63

Distrocan - Jet Set 1-3 Min 3, 63

Distrocan - Jet Set 3-5 Min 3, 63

Distrocan - Jet Set 5-10 Min 3, 63

Drain Box - 16" x 16" x 12" 51, 63

Drain Box - 2' 51, 64

Drain Box - 4' 51, 64

Drain Box - 6' 51, 64

Drain Box - 8' 51, 64

Dual Float - Standard Controller 55, 64

Ductile Iron to Cast Iron/Plastic/Steel 19

## E

EPICOL T 26, 64

## F

Female Connector 1/4" to Thread 1/8" 21, 64

Floor Drain - 12" x 12" x 12" 53

Floor Drain - 18" x 24" x 18" 53

Floor Drain - 18" x 24" x 25" 53

## **G**

**GEOMAX** Geogrid 54

**GEOMAX** Non Woven Geotextile 54, 59

**GEOMAX** Woven Geotextile 54, 59

Graco GH 833 Gas Hydraulic Sprayer - Waterproofing Membranes 12, 65

GRACO - FINISHPRO GX 19 Cordless - Polyurethane Injection 12, 64

GRACO - FINISHPRO GX 19 ELECTRIC - Polyurethane Injection 12, 65

## **H**

Henry 930-18 Poly-TAC 42, 65

Henry Blueskin WP200 45, 65

Henry CM100 48, 65

Hose barb to male pipe connector 1/8" to 1/8" 21, 65

## **I**

Impermashield DB Express 49, 65

Impermashield DB3 / DB10 49, 65

ImpermaShield R Coat 49, 66

Impermashield R Coat DB 49, 66

ImpermaShield T Coat 49, 66

Impermashield T Coat DB 50, 66

Injectaphos Phosphoric Acid Surface Prep - Professional Concrete Crack Repair Enhancer 21, 66

Injection Hose Adapter 90° 22, 66

Injection hose adapter Straight 22, 66

Injection Hoses for Grease Guns 22

Injection Packer with Zerk 22, 66

## **L**

Landscaping Nails - Spiral 31, 67

Landscaping Nails - Common 31, 67

## **M**

Mapefer 1K - Anti-Corrosion Mortar for Reinforcement Rods 6, 67

Mapei - Planiseal Plug 3, 67

Mapei - Planitop 23 3, 67

Mapei - Planitop X 3, 67

Mapei - Planitop XS 3, 67

MAPEI - RESFOAM 1KM 27, 29, 67  
MAPEI - RESFOAM HB 45 27, 29, 68  
MAPEI - RESFOAM HL 35 27, 29, 68  
MAPEI - RESFOAM PF 27, 29, 68  
Mapei Epojet 26, 68  
Mapei Mapeflex P1 FT 5, 68  
Mean Clean 43, 68  
Modular Window Wells 58, 68

## **N**

Non-Radon-Tight Cover - 18" x 24" 53, 68  
Nut Setter 5/16" Non-Magnetic for Zerks 22, 68  
Nylon Tubing 1/4" OD 22, 68

## **P**

Pack of 10 Paint Sleeves 43  
Paint Sleeves - Pack of 10 7  
Perforated 1/2" Injector 22, 69  
Piling Foot - Foundation Stabilization 37, 69  
Plastic Border for Pavers 31, 69  
Plastic Deep Tray - 2L 7, 43, 69  
Plug for Injector 22, 69  
Polybitume 570-05 43, 69

## **R**

Radon-Tight Cover - 18" x 24" 53, 70  
RCF Concrete Crack Lock Kit - 20 Pack with High Strength Anchoring Epoxy Paste 40, 70  
RCF Dual Cartridge Epoxy Adhesive 36, 70  
RCF Dual Cartridge Polyurethane Expanding Foam 23, 70  
RCF Epoxy Gun Dual Cartridge 23, 70  
RCF High Strength Anchoring Epoxy Paste 26, 70  
RCF Kit Bowed Wall Repair Bidirectional 560GSM 5.5" x 8' 40, 70  
RCF Kit Bowed Wall Repair Unidirectional Vertical 400gsm 6" x 8' 40, 70  
RCF Kit Crack Repair Bidirectional 560GSM 12" x 8' 40, 71  
RCF Kit Sill Plate Bracket 40, 71  
RCF Structural Epoxy Injection Resin 26, 71  
RCF Unidirectional Vertical Roll Kit - 400 GSM, 12K Tow, 6" Width 40, 71  
Reducer Female Connector 23, 71  
Robust Caulking Gun for 300ml Cartridges 43, 71

Rubber injection ports 23, 72

## **S**

SDR28 34

SDR35 34

SPETEC GEN ACC 27, 30

SPETEC GEN ACC FAST 27, 30

SPETEC GT350 27, 30, 72

SPETEC H100 27, 30, 72

SPETEC PUMP CLEANER 28, 30, 72

SPETEC SEAL F400 28, 30, 72

Split Foam Sleeve - 9" x 3/4" 7, 43, 72

Stainless Steel Silicone Fluid Filled Pressure Gauge - 0 - 1000 PSI - LM Mount 23, 72

Stainless Steel Silicone Fluid Filled Pressure Gauge - 0 - 10000 PSI - LM Mount 23, 72

Stainless Steel Silicone Fluid Filled Pressure Gauge - 0 - 4000 PSI - LM Mount 24, 73

Static Mixer 24, 73

STOPAQ 2100 AQUASTOP 24, 73

Structural Foundation Plate - Corner 38, 73

Structural Foundation Plate - Straight 38, 73

Super Industrial Stripping Glove X-Large 44

## **T**

T-Shaped Injector 24, 73

Tajima High-Quality Dual Cartridge Resin Gun 24, 73

Tampico Fiber Brush - 13" x 6.75" x 2" 2, 7, 44, 73

TCT Hole Saw 31, 74

Teflon 1/2" x 40' 24, 74

Thiromo T-60 9, 74

Thiromo T20 - Plastic Cement 7, 44, 74

Thiromo T20W - Plastic Cement - Winter Grade 8, 44, 74

## **U**

UCAN SDS Plus Premium - 4 Cutter Drill Bits 39, 74

UCAN TORPEDO® Bolt - Carbon Steel Mechanical Galvanized 39, 74

Union Female Connector 1/4" to 1/4" 24, 74

## **W**

Wedge Anchors - Carbon Steel Zinc Plated 39, 75

Wifi Module 55, 75

18" x 30" Radon-Proof Pit 56