



DISTROCAN



CATALOGUE DE PRODUIT

- 📍 333 Rue St-HubertLaval, QC H7G 2Y5
- 📍 2855 Mnt Masson, Laval, QC H7B 1E3
- 📍 250 Boul. Industriel, Boucherville, QC J4B2X4

☎ 1-800-619-0916 ✉ info@distrocan.ca

distrocan.ca

ALL PRODUCTS



GEOMAX WOVEN GEOTEXTILE

SKU: GEOMAXW13350



GEOMAX NON WOVEN GEOTEXTILE

SKU: GNT12350 / GNT3350 / GNT6350



4" COUPLING

SKU: 1M0040



4" NON PERFORATED

SKU: SS04010



ALEMITE GASKET REPAIR KIT

SKU: 336523



ALEMITE GREASE GUN FOR POLYURETHANE INJECTION

SKU: 586-B



**ALUMINUM CHECKER PLATE
COVER - 18" X 24"**

SKU: CA1824



BACKUP COMBO PUMP

SKU: PSC22



BAKOR 700-01

SKU: BK70001074



BAKOR AQUA-BLOC 720-38

SKU: BK72038074



BAKOR AQUA-BLOC 770-06

SKU: BK77006070



BAKOR BLUESKIN ADHESIVE

SKU: BK101677



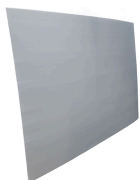
BAKOR NP180 PP

SKU: BH180PP985



BAKOR POLY FAB

SKU: BKPF600



**BAKOR POLYPROPYLENE
PROTECTION BOARD**

SKU: BK99031458



BAKOR YELLOW JACKET

SKU: BK99006876 (6" x 150') / BK99006875
(36" x 150')



**BALL VALVE 1/8" X 1/8" FF
THREADED BOTH SIDES**

SKU: 14.1102



BLUESKIN SA

SKU: BH200SA977



**BRASS FITTING FEMALE TO
MALE PIPE ADAPTER 1/8"
MALE TO 1/4" FEMALE**

SKU: 33.1912



**BRASS FITTING TEE 1/8"
FEMALE WITH TWO 1/8"
FEMALE**

SKU: 33.3410



CAGE FOR ROLLER - 9 1/2"

SKU: ZFR499N



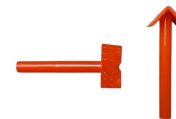
CAST IRON PILE POINT

SKU: DISTROPOINTE3 / DISTROPOINTE4



CAST IRON PUMP

SKU: CIS-33V



CORNER INJECTOR

SKU: INJECTA-PCE50



CORRUGATED WINDOW WELLS

SKU: N/A



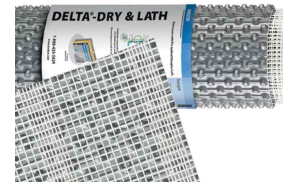
COUPLER FOR INJECTION

SKU: 600105



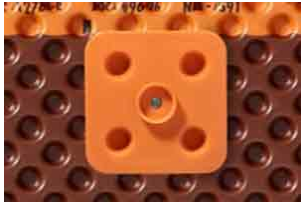
DELTA DRAIN

SKU: 22600014 / 22600015



DELTA DRY & LATH

SKU: N/A



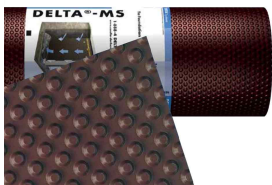
DELTA FASTNER

SKU: 22610005 / 22610006



DELTA MOLD STRIP

SKU: 22610021



DELTA MS

SKU: 22600001 / 22600002 / 22600003 /
22600004 / 22600005 / 22600006



DELTA SEALANT

SKU: 22610015



DELTA VENT S

SKU: N/A



DELTA VENT SA

SKU: N/A



DESOI - ACRYLATE GEL PUMP

SKU: 17602



DESOI - AIRPOWER S25-2C PUMP

SKU: 17601



DEWALT AC100 GOLD

SKU: 8478SD-PWR



DISTROCAN JET SET 1-3 MIN

SKU: JETSET13



DISTROCAN JET SET 3-5 MIN

SKU: JETSET35



DISTROCAN JET SET 5-10 MIN

SKU: JETSET510



DRAIN BOX - 16" X 16" X 12"

SKU: DBG1616



DRAIN BOX - 2'

SKU: CP24-12-12



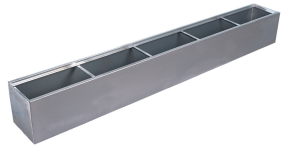
DRAIN BOX - 4'

SKU: CP48-12-12



DRAIN BOX - 6'

SKU: DBG72-12-12



DRAIN BOX - 8'

SKU: DBG96-12-12



DUAL FLOAT - STANDARD CONTROLLER

SKU: N/A



FEMALE CONNECTOR 1/4" TO THREAD 1/8"

SKU: 32.1156



GRACO - GH 833 - GAS HYDRAULIC SPRAYER - WATERPROOFING MEMBRANES

SKU: 249617



GRACO - FINISHPRO GX 19 CORDLESS - POLYURETHANE INJECTION

SKU: 25U341



GRACO - FINISHPRO GX 19 ELECTRIC- POLYURETHANE INJECTION

SKU: 17F924



HENRY 930-18 POLY-TAC

SKU: BK018621



HENRY BLUESKIN WP200

SKU: HEWP200937



HENRY CM100

SKU: HE78060073



**HOSE BARB TO MALE PIPE
1/8" ID TO 1/8" MNPT**

SKU: 33.4110



**HTS PE-85 POLYUREA JOINT
FILL**

SKU: PE85



**HTS TX-3 URETHANE
CONCRETE REPAIR**

SKU: TX3-22OZ



IMPERMASHIELD DB EXPRESS

SKU: 48-BD-AXC-5



IMPERMASHIELD DB3 / DB10

SKU: 48-00300 (DB3) / 48-01000 (DB10)



IMPERMASHIELD R COAT

SKU: IMPERMAR5



IMPERMASHIELD R COAT DB

SKU: 1724-WPT-5 / 1724-WPT-55



IMPERMASHIELD T COAT DB

SKU: 48-BD-TG-5



INJECTAPHOS PHOSPHORIC ACID

SKU: INJECTAPHOS1L / INJECTAPHOS20L



INJECTION HOSE ADAPTER 90°

SKU: FU-3459-04-02



INJECTION HOSE ADAPTER STRAIGHT

SKU: FU-3269-04-02



INJECTION PACKER WITH ZERK

SKU: DISTROPACKNYL / INJECTAPNP100



LANDSCAPING NAILS - SPIRAL

SKU: CLOUSPLSP250



**LANDSCAPING NAILS -
COMMON**

SKU: CLOUSPLC50



MAPEI EPOJET

SKU: 1561144 (399ml) / 1561111KIT (11.35L)



MAPEI MAPEFER 1K

SKU: 2766105



MAPEI MAPEFLEX P1 FT

SKU: 2UA1516253



MAPEI PLANISEAL PLUG

SKU: 2437025



MAPEI PLANITOP 23

SKU: 2758720



MAPEI PLANITOP X

SKU: 2757423



MAPEI PLANITOP XS

SKU: 2757323



MAPEI RESFOAM 1KM

SKU: 2446120



MAPEI RESFOAM HB 45

SKU: 2445958



MAPEI RESFOAM HL 35

SKU: 2445619-1



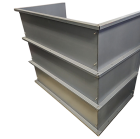
MAPEI RESFOAM PF

SKU: 2445419



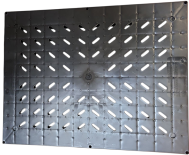
MEAN CLEAN

SKU: DISTROMEAN5GAL



MODULAR WINDOW WELLS

SKU: N/A



**NON-RADON-TIGHT COVER -
18" X 24"**

SKU: 4HCGH



**NUT SETTER 5/16" NON-
MAGNETIC FOR ZERKS**

SKU: PM-869/4



NYLON TUBING 1/4" OD

SKU: 40.1140



PERFORATED 1/2" INJECTOR

SKU: INJECTA-PPE100



**PILING FOOT - FOUNDATION
STABILIZATION**

SKU: DISTROSAB3 / DISTROSAB4



**PLASTIC BORDER FOR
PAVERS**

SKU: N/A



PLASTIC DEEP TRAY - 2L

SKU: ZTR200



POLYBITUME 570-05

SKU: BK570S664 (300ml) / BK570S686 (850ml) / 694266611003 (10kg)



PLUG FOR INJECTOR

SKU: INJECTA-BE100



RADON-TIGHT COVER - 18" X 24"

SKU: 4HCVH



RCF CONCRETE CRACK LOCK KIT

SKU: FG20040



RCF DUAL CARTRIDGE EPOXY ADHESIVE

SKU: FG20074



RCF DUAL CARTRIDGE POLYURETHANE EXPANDING FOAM

SKU: FG20077



RCF HIGH STRENGTH ANCHORING EPOXY PASTE

SKU: FG20075 (600ml) / FG20177 (2 Gal.)



RCF KIT BOWED WALL REPAIR BIDIRECTIONAL

SKU: FG20031



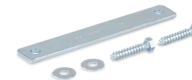
RCF KIT BOWED WALL REPAIR UNIDIRECTIONAL VERTICAL

SKU: FG20036



RCF KIT CRACK REPAIR BIDIRECTIONAL

SKU: FG20053



RCF KIT SILL PLATE BRACKET

SKU: FG20061



RCF STRUCTURAL EPOXY INJECTION RESIN

SKU: FG20076



RCF UNIDIRECTIONAL VERTICAL ROLL KIT

SKU: FG20060



REDUCER FEMALE CONNECTOR

SKU: 32.3370 / 32.3379 / 32.3379



RESIPLAST EPICOL T

SKU: 120298



ROBUST CAULKING GUN FOR 300ML CARTRIDGES

SKU: 106617



RUBBER INJECTION PORTS

SKU: INJECTA-PRE1000



SEALBOSS - PA 3000 EPOXY INJECTION PUMP

SKU: PA3000



SILICONE FLUID FILLED PRESSURE GAUGE

SKU: 62.6670 / 62.6688 / 62.6695



SOUDAL SOUDASEAL AP SEALANT

SKU: N/A



SPETEC F400

SKU: 101884



SPETEC GT350

SKU: 101888



SPETEC H100

SKU: 101895



SPETEC PUMP CLEANER

SKU: 103001



SPLIT FOAM SLEEVE - 9" X 3/4"

SKU: Z9SF20



STATIC MIXER

SKU: INJECTASM1432 / INJECTASM3830



STOPAQ 2100 AQUASTOP

SKU: 103025



STRUCTURAL FOUNDATION PLATE - CORNER

SKU: DISTROPLCOIN



STRUCTURAL FOUNDATION PLATE - STRAIGHT

SKU: DISTROPL60-6TROUS



T-SHAPED INJECTOR

SKU: INJECTA-PTE100



TAJIMA HIGH-QUALITY DUAL CARTRIDGE RESIN GUN

SKU: CNV-DSP26



**TAMPICO FIBER BRUSH - 13"
X 6.75" X 2"**

SKU: DISTROTAMPICO511



TCT HOLE SAW

SKU: DISTROTCT325



TEFLON 1/2" X 40'

SKU: 33.9080



THIROCO T-60

SKU: T60189



THIROCO T20

SKU: T20020



THIROCO T20W

SKU: T20W20



**UCAN SDS PLUS PREMIUM - 4
CUTTER DRILL BITS**

SKU: SDP



UCAN TORPEDO® BOLT

SKU: UTB



**UNION FEMALE CONNECTOR
1/4" TO 1/4"**

SKU: 32.2158



**WEDGE ANCHORS - CARBON
STEEL ZINC PLATED**

SKU: WED



WIFI MODULE

SKU: PS-WIFI2